



East Dunbartonshire Sports Playing Pitch Assessment & Strategy Report

May 2024

PART 1: INTRODUCTION	3
PART 2: PLAYING PITCH STRATEGY METHODOLOGY	4
PART 3: CONTEXT	8
3.1: National context	8
3.2: Sports governing body context	9
3.4: National planning context: National Planning Framework	11
3.3: Local community planning context	12
3.5: Progress during previous Sports Pitch Strategy 2016-2022	13
PART 4: FOOTBALL	14
4.1: Introduction	14
4.2: Supply	15
4.3: Demand	22
4.4: Capacity analysis	24
4.6: Conclusions	29
Football summary	29
PART 5: RUGBY UNION	30
5.1: Introduction	30
5.2: Supply	30
5.3: Demand	34
5.4: Capacity analysis	36
5.5: Supply and demand analysis	38
5.6: Conclusions	38
Rugby union summary	38
PART 6: HOCKEY	39
6.2: Supply	39
6.3: Demand	40
6.4: Supply and demand analysis	40
6.5 Conclusions	40
Hockey summary	40
PART 7: SYNTHETIC TURF PITCHES (STP)	41
7.1 Introduction	41
7.2 Current provision	41
7.3 Availability	44
7.4 Quality	50
7.5 Supply and demand analysis	51
PART 8: DRAFT GENERAL RECOMMENDATIONS	52
APPENDIX A: FOOTBALL TEAM BREAKDOWN	52
APPENDIX B: LIST OF CLUBS CONSULTED AND RESPONDED	55
APPENDIX C: NON TECHNICAL ASSESSMENT SHEETS	56



PART 1: INTRODUCTION

This is the draft Playing Pitch Assessment and Strategy Report prepared by Knight Kavanagh & Page Ltd (KKP) for East Dunbartonshire. It has been commissioned by East Dunbartonshire Leisure and Culture (EDLC) and East Dunbartonshire Council (EDC).

In agreement with **sportscotland**, the report presents a supply and demand assessment of playing pitch facilities in accordance with Sport England's Guidance 'Developing a Playing Pitch Strategy'. It has been followed to develop a clear picture of the balance between the local supply of, and demand for, playing pitches.

The guidance details a 13-step approach to developing a playing pitch strategy (PPS). These steps are separated into five distinct sections:

- **Stage A:** Prepare and tailor the approach
- **Stage B:** Gather information and views on the supply of and demand for provision
- **Stage C:** Assess the supply and demand information and views
- **Stage D:** Develop the strategy
- **Stage E:** Deliver the strategy and keep it robust and up to date

Stages A-C are covered in Parts 1 to 7 of this report. Draft recommendations are to be added to the end of this report (Part 8) to form a draft strategy.

PART 2: PLAYING PITCH STRATEGY METHODOLOGY

Stage A: Prepare and tailor the approach

Why the PPS is being developed

EDLC and EDC commissioned a playing pitch strategy (PPS) for the area in order to provide a robust and objective assessment of provision. The process involves carrying out a comprehensive assessment of supply and demand issues in respect of outdoor field sports pitch site provision for football, rugby and hockey, including synthetic turf pitches. It includes all facilities whether managed within the public, private, voluntary or education sectors.

It identifies local need for provision within East Dunbartonshire and will serve as the key evidence base to inform future strategic planning and priorities in sport and recreation facilities across the area. It looks to examine:

- The current supply of all outdoor sports pitch provision.
- The identified provisions capacity and current use.
- Current and future demand identified from clubs and population growth.
- Demand pressures created as a result of specific sports development pressures (e.g. growth of mini soccer, wider use of artificial grass pitches).
- Identify any inequalities in supply and demand across the area.
- Highlight priority sites in terms of development and improvement opportunities.

It provides a picture of current and future demand which will assist in establishing provision priorities. It will particularly help to identify areas in need of protection and improvement in order to meet the current and future demand for outdoor pitch sports.

Outdoor pitch facilities for the following sports are included within the study:

- Football
- Rugby
- Hockey
- Synthetic turf (STPs).

Study area

The study encompasses the whole of East Dunbartonshire. Assessment of provision and examination of spare capacity and overplay is undertaken for the whole of the area and where applicable at a local level. The areas and settlements recognised within the report are:

- Bearsden
- Bishopbriggs
- Kirkintilloch/ Lenzie
- Lennoxton
- Milngavie
- Milton of Campsie
- Torrance
- Twechar

Stage B: Gather information and views on the supply of and demand for provision

It is essential that a PPS is based on the best and most accurate and up-to-date information available about the supply of and demand for playing pitches. This section provides detail about how this information has been gathered in East Dunbartonshire.

An audit of playing pitches

The following definitions for a playing pitch and playing field are used within the context of the study.

- **Playing pitch** – a delineated area which is used for association football, rugby, cricket, hockey and other sports (e.g. lacrosse, rounders, baseball, softball, American football, Australian football, Gaelic football, shinty, hurling, polo or cycle polo).
- **Playing field** – the whole of a site which encompasses at least one playing pitch.

Quantity

All playing pitches, including potentially disused ones, are included irrespective of ownership, management and use. Playing pitch sites were identified using data provided by EDLC in collaboration with EDC. The process was supported by EDLC checking and updating the initial data. This was also verified against information supplied by clubs. For each site the following detail is recorded in the project database (is supplied as an electronic file):

- Site name, address (including postcode) and location.
- Ownership and management type.
- Total number, type and quality of pitches.
- A description and the quality of the ancillary facilities.

Accessibility

Not all pitches offer the same level of access to the community. The ownership and accessibility of sports pitches also influences their actual availability for community use. Each site is assigned a level of community use as follows:

- **Available for community use and used** - pitches in public, voluntary, private or commercial ownership or management (including education sites) recorded as being available for hire and currently in use by teams playing in community leagues.
- **Available but unused** - pitches that are available for hire but are not currently used by teams which play in community leagues; this most often applies to school sites but can also apply to sites which are expensive to hire.
- **No community use** - pitches which as a matter of policy or practice are not available for hire or use by teams playing in community leagues. This should include professional club pitches along with some semi-professional club pitches where play is restricted to the first or second team.

Quality

The capacity for pitches to regularly provide for competitive play, training and other activity over a season is most often determined by their quality. As a minimum, the quality and therefore the capacity of a pitch affects the playing experience and people's enjoyment of a sport. In extreme circumstances it can result in a pitch being unable to cater for all or certain types of play during peak and off-peak times.

It is not just the quality of the pitch itself which affects its capacity but also the quality, standard and range of ancillary facilities. These factors combined will determine whether a pitch is able to contribute to meeting demand from various groups and for different levels and types of play.

The quality of all pitches identified in the audit and the ancillary facilities supporting them is assessed regardless of ownership, management or availability. Along with capturing any details specific to the individual pitches and sites, a quality rating is recorded within the audit for each pitch.

The ratings are used to help estimate the capacity of each pitch to accommodate competitive and other play within the supply and demand assessment.

In addition to undertaking non-technical site visit assessments, using the templates provided within the guidance (a template is provided in **Appendix C**), users and providers were also consulted with regard to quality and, in some instances, the quality rating adjusted to reflect this.

Developing a picture of demand

Current demand

Presenting an accurate picture of current demand for playing pitches (i.e. recording how and when they are used) is important in order to carry out the full supply and demand assessment.

Demand for playing pitches in East Dunbartonshire tends to fall within the categories:

- Organised competitive play
- Organised training
- Informal play

In addition, unmet and displaced demand for provision is also identified on a sport-by-sport basis. Unmet demand is defined as the number of additional teams that could be fielded should access to a sufficient number of pitches (and ancillary facilities) be available. Displaced demand refers to teams generated from residents of the area but, due to any number of factors, do not currently play within the area.

Future demand

Alongside current demand it is important for a PPS to assess whether future demand for playing pitches can be met. Using population projections and club development plans/aspirations, an estimate can be made of the likely future demand for playing pitches in East Dunbartonshire. Current and future demand for playing pitches is presented on a sport-by-sport basis within the relevant sections of this report.

Consultation

A variety of consultation methods was used to collate demand information. An open invitation forum was held giving clubs the opportunity to comment and voice their opinion on current provision and issues.

Online consultation was carried out with key clubs from each sport (identified with and via consultation with national sports governing bodies or SGBs and local officers). In addition, an online survey was also utilised. This was sent to all clubs. A list of consultees is provided in **Appendix B**. This allowed for collection of detailed demand information and exploration of key issues to be interrogated and more accurately assessed.

Stage C: Assess the supply and demand information and views

Supply and demand information gathered within Section B was used to assess the adequacy of playing pitch provision in East Dunbartonshire. It focused on looking at how much use each site could potentially accommodate (on an area-by-area basis) compared to how much use is currently taking place.

Understand how a site is being used

Qualitative pitch ratings are linked to a pitch capacity rating derived from guidance and tailored to suit a local area. The quality and use of each pitch is assessed against the recommended pitch capacity to indicate how many match equivalent sessions per week a pitch could accommodate. This is compared to the number of matches actually taking place and categorised as follows to identify:

Potential spare capacity: Play is below the level the site could sustain.	Green
At capacity: Play is at a level the site can sustain.	Yellow
Overused: Play exceeds the level the site can sustain	Red

Develop the current picture of provision

Once capacity is determined on a site-by-site basis, actual spare capacity is calculated on an area by area basis via further interrogation of temporal demand. Although this may have been identified it does not necessarily mean that there is surplus provision. For example, spare capacity may not be available at the time when it is needed or the site may be retained in a 'strategic reserve' to enable pitch rotation to reduce wear and tear.

Capacity ratings assist in the identification of sites for improvement/development, rationalisation, decommissioning and disposal.

Section D: Develop the strategy

By completing Sections B and C it is possible to identify several findings and issues relating to the supply, demand and adequacy of playing pitch provision in East Dunbartonshire. This report seeks to identify and present the key findings and issues, which should now be checked, challenged, and agreed prior to development of the Strategy (Section E).

PART 3: CONTEXT

3.1: National context

Sportscotland Corporate Plan: Sport for Life (2022)

Sport For Life is the latest corporate strategy launched by **sportscotland** and outlines its vision and approach. Its stated vision is *'to create an active Scotland where everyone benefits from sport'*. This is to be achieved under five different themes:

Table 3.1: Sportscotland Corporate Plan themes

Theme	Description
Making an impact together	Assist partners to work together to make the best use of the money, time, information and expertise in the sport. This is to ensure everyone will make the most of Scotland's facilities and outdoor spaces.
Making sport more accessible	sportscotland will encourage people to get involved, whatever the sport and wherever they choose to take part. Not everyone feels they can participate or progress in sport. By listening to what matters to people, the sporting system can better meet their needs. sportscotland shares insight on how to make sport more inclusive, with some opportunities tailor-made for specific needs.
Progressing to your level	sportscotland wants everyone to take part in sport at the level they choose. This could mean pulling on trainers for the first time or performing consistently on the world stage. There will be a need to develop the pathways with all sports and resources that support people on their sporting journey.
Celebrating the benefits of sport	Taking part in sport creates wider benefits in areas such as health, education, communities and the economy. These benefits can be either inherent or intentional. sportscotland will work with partners to promote how sport benefits people's lives.
Contributing to an active Scotland	Sport plays an important role alongside other agencies in creating an active Scotland, where more people are more active more often. sportscotland will lead the sporting system to demonstrate its contribution to all the Active Scotland Outcomes (see below).

Active Scotland Outcomes Framework

This describes the country's ambitions for sport and physical activity and contributes to the delivery of the stated national outcomes with the overarching purpose of creating a more successful country, with opportunities for all to flourish. It describes the key outcomes desired for sport and physical activity levels in Scotland over the next ten years. These will be achieved through collective efforts of communities, individuals and a wide range of partners. The headline measure of progress is the proportion of the population who meet the recommended level of physical activity. The outcomes include:

- Encourage and enable the inactive to be more active
- Encourage and enable the active to stay active throughout life
- Develop physical confidence and competence from the earliest age
- Improve our active infrastructure – people and places
- Support wellbeing and resilience in communities through physical activity and sport
- Improve opportunities to participate, progress and achieve in sport

3.2: Sports governing body context

Scottish FA: THE POWER OF FOOTBALL STRATEGIC PLAN 2021-2025

Developed in partnership with UEFA GROW, the vision is to harness the many ways in which people engage with football from the first touch in the school playground, to a career on or off the pitch, and to the memories that rekindle a lifelong love of the game. The stated vision is to *'harness the power of football to inspire the nation, transform lives and build a united and successful game'*. To achieve this, the strategy identifies six pillars which will be achieved throughout the period of the strategy.

- Qualify consistently and compete in major tournaments, creating an exciting generation of footballers to reach the top.
- Accelerate the growth of girls' and women's football, by taking the game to the next level both domestically and internationally.
- Inspire the nation through lifelong participation, making the game more accessible.
- Deliver a world-leading coach education and development system.
- Modernise the home of Scottish Football, creating a sustainable future for the national game.
- Connect Scottish football's diverse communities.

The Big Pitch

The Scottish FA's first facility focused strategy, it identifies common facility-related issues across the country and what is required to deliver new and improved facilities in future. It states that many grass football pitches are 'not fit for purpose' due to poor drainage, uneven surfaces – a situation exacerbated by budgetary pressures noting that this can lead to a poor introduction to the game for young players. A fundamental element is the impact of local authority playing pitch strategies. Strong emphasis is also placed on provision of synthetic turf pitches (STPs) due to the Scottish climate and the substantial quantity of play taking place on natural turf. Importantly the Scottish FA's preference is that new SGP's are of a 3G standard as a minimum.

Scottish Rugby: Rugby Development Strategy 2019 - 2023

The stated aim is to build a vibrant and sustainable game for all where each individual and rugby community is valued. This is to be delivered through the following key objectives:

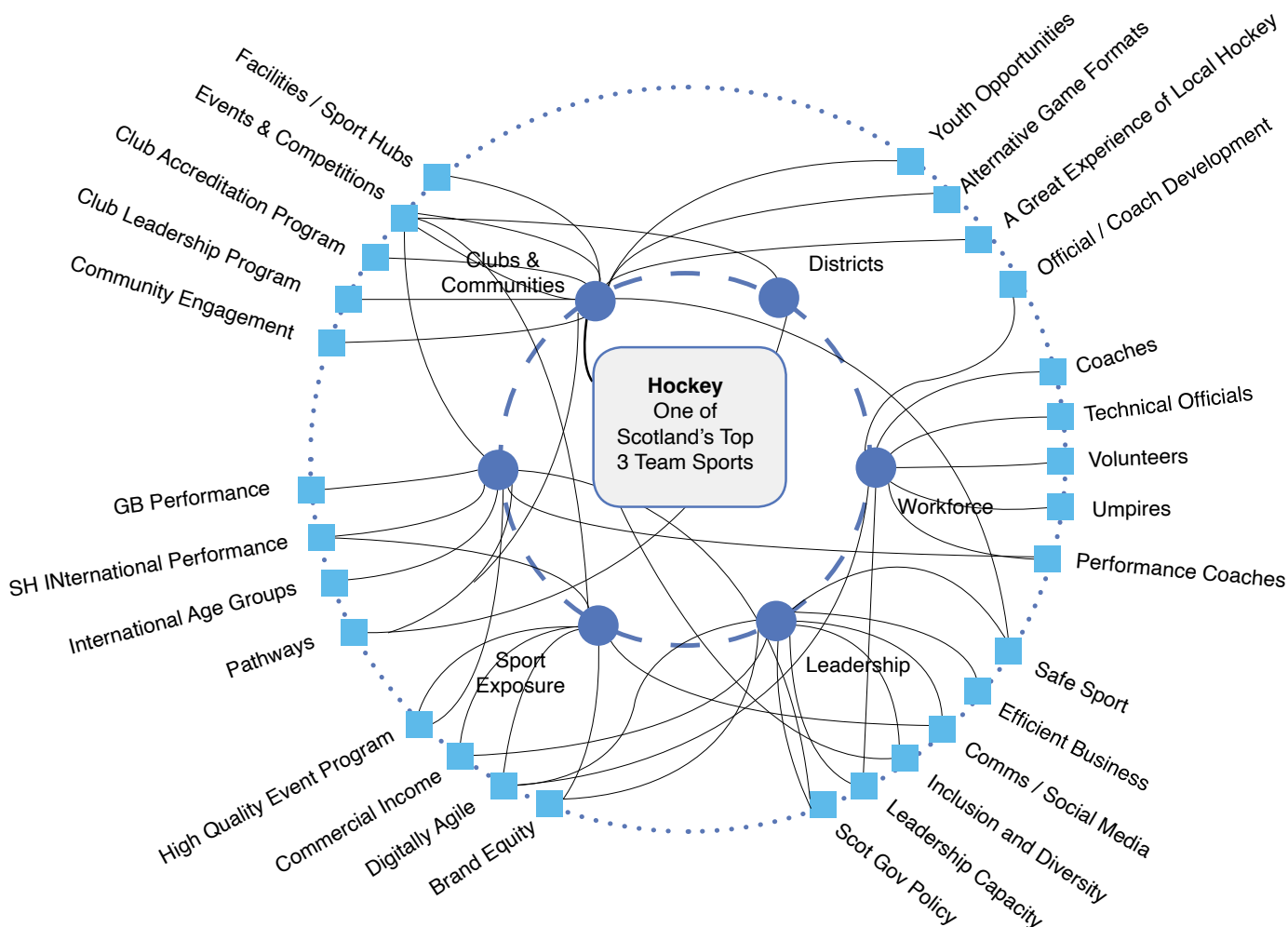
- Build sustainable, vibrant and inclusive rugby clubs and communities that will increase the number of quality opportunities for people to participate at all levels of our game.
- Increase the number of playing opportunities by improving player retention, supporting transition from the youth to adult game and by providing alternative game formats.
- Support and develop staff to evolve the game through delivery of an inclusive coach, teacher, match official and volunteer development programme.
- Support growth in the women and girls' game by increasing the number of regular playing opportunities.
- Build sustainable, vibrant and inclusive rugby communities that will increase the number and quality of opportunities for people to participate at all levels of our game.
- Collaborate with key stakeholders and partner organisations to support us to deliver a well-governed and safe rugby environment for everyone.
- Continue to develop the Scottish Rugby Union Management System (SCRUMS) to be the data source for all Club.

Scottish Hockey: Strategic Plan 2019 – 2023

Scottish Hockey’s vision within the timeframe of the strategy is to be one of the top three participated team sports in Scotland, assessed across all aspects of the sporting landscape, including membership growth, equalities and international performance. The continued mission, in partnership with its clubs, authorities and schools, is to “inspire involvement” in hockey. This will be achieved through the delivery of the following strategic goals - as illustrated in Figure 3.1.

- Clubs & communities – continue to build and expand a network of strong, sustainable Clubs to grow the game.
- Districts - support districts to deliver great experiences of local hockey.
- Performance - systematically deliver successful Scotland teams and medal winning GB athletes.
- Workforce - grow, develop and support volunteers.
- Sport exposure – create new commercial income streams and support members through events and effective social-media channels.
- Leadership – create a safe sport for all, supported by an efficient, effective business.

Figure 3.1: Scottish Hockey Strategic Framework



3.4: National planning context: National Planning Framework

Scotland 2045 outlines Scotland's National Spatial Strategy. These key principles are:

- **Just transition.** To empower people to shape their places and ensure the transition to net zero is fair and inclusive.
- **Conserving and recycling assets.** Make productive use of existing buildings, places, infrastructure and services, locking in carbon, minimising waste, and building a circular economy.
- **Local living.** Support local liveability and improve community health and wellbeing by ensuring people can easily access services, greenspace, learning, work and leisure locally.
- **Compact urban growth.** Limit urban expansion so we can optimise the use of land to provide services and resources, including carbon storage, flood risk management, blue and green infrastructure and biodiversity.
- **Rebalanced development.** Target development to create opportunities for communities and investment in areas of past decline and manage development sustainably in areas of high demand.
- **Rural revitalisation.** Encourage sustainable development in rural areas, recognising the need to grow and support urban and rural communities together.

To improve community health and wellbeing, policy 21, aims to '*encourage, promote and facilitate spaces and opportunities for play, recreation and sport*'. The key elements are:

- Development proposals which result in the loss of outdoor sports facilities will only be supported where the proposal meets a requirement to replace the facility which would be lost, or it can be demonstrated that there is no ongoing or future demand.
- Development proposals likely to be occupied or used by children and young people will be supported where they incorporate well designed, good quality provision for recreation, that is proportionate to the scale and nature of the development and existing provision in the area.
- New or enhanced sport facilities will only be approved if they have effective management and maintenance plans covering the funding arrangements for their long-term delivery and upkeep.

3.3: Local community planning context

Local Outcomes Improvement Plan 2017-2027

Under the headline vision of '*working together to achieve the best for the people of East Dunbartonshire*', the Local Outcomes Improvement Plan (LOIP) combines the input of strategic agencies including EDC, NHS Greater Glasgow & Clyde and Police Scotland to improve services and reduce inequalities via joint projects, agreeing joint policies, effective inter-agency communication and sharing expertise.

Key outcomes:

- 1. Economic growth and recovery:** East Dunbartonshire has a sustainable and resilient economy with busy town and village centres, a growing business base and is an attractive place to visit and invest in.
- 2. Employment and skills:** Equipping residents with knowledge/skills for learning, life and work.
- 3. Children and young people:** Children and young people are safe, healthy and ready to learn.
- 4. Safer and stronger communities:** East Dunbartonshire is a safe place in which to live, work and visit.
- 5. Adult health and wellbeing:** residents experience good physical/mental health & wellbeing with access to a quality built/natural environment in which to lead healthier more active lives.
- 6. Older adults, vulnerable people & carers:** the older population is supported to enjoy a high quality of life.

3.5: Progress during previous Sports Pitch Strategy 2016-2022

The previous Strategy was significantly impacted by the global COVID-19 pandemic between 2020 and 2022. Delays caused by national lockdowns and associated post-pandemic cost increases directly affected both the delivery of capital pitch project developments and continuity of sports provision. Despite this, progress was made in both infrastructure provision and operational management practice. This included:

- Increased investment in grass pitch and pavilion infrastructure.
- Increased liaison between EDLC Football Development, clubs and EDC schools letting and alignment of space bookings.
- Closer working between EDLC and EDC's Grounds Maintenance Service in respect of contracts and regimes for pitches. EDLC was involved in both the specification for the new Grounds Maintenance Contract tender and ongoing performance monitoring.

Since the previous PPS, there has been the following investment:

Table 3.2: Investments since last PPS

Site	Nature of investment	Investment
Huntershill Sports Hub	Installation of two full sized 3G pitches.	£7.8M
Merkland Outdoor Recreation Centre	New full size 3G surface & shock pad. New boiler, lower changing refurb, upper level internal & whole building external repaint, perimeter fencing for grass pitch.	£300K
Boghead grass pitches	Drainage improvements	£200K
Oakburn	Drainage improvements	£30K
Station Road	Drainage improvements	£50K
Luggie Park/Waterside Road	Additional grass pitch at Luggie replacement pitch at Waterside along with upgrade to changing provision.	£850K
New Lenzie Academy	New 9v9 youth 3G pitch with shockpad (rugby only).	£500K
Total investment		£9.73M

Future investments

A strategic commitment was made to deliver two further major capital projects in the previous strategy. Both, however, were delayed due to the pandemic. These are:

- New full-sized 3G pitch and expanded pavilion at High Park Lennoxton - £4.3M (opened April 2024).
- Kirkintilloch Community Sports Hub £5M (opening mid 2024).

This represents an investment of a further **£9.3M**, giving a total of **£19.03M** in new and upgraded provision.

In addition, EDC, as part of its 10-year Capital Programme Budget, has included a commitment to explore further improvement of changing provision at the following:

- Colquhoun Pavilion
- Thorn Park
- Merkland Recreational Centre

PART 4: FOOTBALL

4.1: Introduction

The Scottish Football Association (SFA) is the main governing body for both professional and non-professional football in Scotland and East Dunbartonshire. It has several affiliated associations that manage different formats of the game which are summarised below:

Table 4.1: Summary of affiliated associations

Organisation	Role and responsibilities
Scottish FA (SFA)	The governing body for the sport in Scotland, it has ultimate responsibility for the administration and running of the professional game and strategic responsibility for the affiliated associations beneath it, as follows.
Scottish Amateur FA (SAFA)	The SAFA legislates for and fosters the game of football as played by amateurs. It organises a number of cup competitions at national and district level.
Scottish Junior FA (SJFA)	The SJFA aims to foster and develop the game of football among all junior clubs in Scotland.
Scottish Schools Football Association (SSFA)	The SFA oversees primary and secondary school football at regional, national, and international level.
Scottish Women's Football (SWFA)	The SWFA was formed in 1972. It currently has c. 4,000 registered players. Women's football is considered to be one of the major growth sports in Scotland.
Scottish Youth FA (SYFA)	The SYFA is the governing body of youth football in Scotland. It is responsible for every day, recreational, grassroots football in Scotland and includes age groups up to (and including) the age of 21.
Scottish Welfare FA	Mostly concurrent with the SAFA, it oversees c. 500 clubs for summer and winter football.
Scottish Para-Football	It supports participants from a range of para-football disciplines with the aim to allow individuals to reach their full potential.

Consultation

An electronic survey was sent to all identified East Dunbartonshire football clubs. In addition, open invitation forums were held at Huntershill Sports Hub in December 2023 and May 2024 to give clubs an opportunity to provide feedback and opinions in person.

Fourteen football clubs were identified as using pitches within East Dunbartonshire. A total of five clubs completed and returned a survey, in addition, 15 attended the club forum to discuss football provision across the Authority. (NB: One new East Dunbartonshire Club, Phoenix Girls is currently displaced. It currently plays at Scotstoun Sports Campus).

Key themes

The key themes which came out the consultation are:

Accessing school 3G pitches on a Sunday - There are nine full sized 3G pitches located at schools all with community access. These are available during the week and on Saturdays, but not available on a Sunday. This is due to the fact that the original contract established between schools and EDC (which manages the pitches) does not cover seven days. Due to the growth of the game, especially girls' football, clubs have to use pitches elsewhere on a Sunday to accommodate fixtures.

Cost of hiring 3G pitches - hire charges made for school pitches, leisure trust pitches and pitches outside the authority reportedly differ significantly. Clubs would prefer a constant hire price across the authority (and beyond), to ensure certain pitches do not get booked up due to them being cheaper than others. This is discussed further in section 4.2.

Lack of 3G pitches in Milngavie - there is one club in Milngavie (Milngavie FC). Due to its size (it currently runs 25 teams), it would like a second 3G pitch in the area to accommodate both training and match play demand. There is currently one full sized 3G pitch in Milngavie, at Douglas Academy.

4.2: Supply

The audit identifies a total of 48 football pitches across 24 sites in East Dunbartonshire. Of these, 33 are available for community use (at 18 sites). All pitches are identified as adult size with the exception of those at Loretto Playing Fields (which has a 7v7 and a 5v5) and Auchenhowie Sports Hub which has a 7v7 and a 5v5.

A senior size 11v11 pitch is recommended by **sportscotland** at 120m x 90m (maximum) to 90m x 45m (minimum); average pitch size is therefore 100m x 60m (not inclusive of a 3m runoff on each side).

Accessibility

The club survey along with the consultation session indicates that the majority of clubs (92%) playing in East Dunbartonshire hire pitches on a regular basis. No club owns its own ground nor do clubs have a long-term lease on a formal pitch site.

The analysis confirms that some East Dunbartonshire clubs also use provision outside the Authority. Phoenix Girls FC, a new club, uses Scotstoun Sports Campus in Glasgow for its matches, due to challenges accessing pitches within the Authority. Other examples include Milngavie U15s which plays at Balfron Sports Facility (Stirling), Harestanes which uses Broadwood (Cumbernauld), Rossvale, West Park Utd and Rosebank which also uses North Lanarkshire and Falkirk pitch venues.

Table 4.2 presents a list of all pitches in East Dunbartonshire. The majority (33) are community available. Those that are not include the grass pitches at both the Celtic Training Ground and Rangers Academy.

Some grass pitches at education sites are also unavailable. These include Bearsden Academy (2 pitches) and Kirkintilloch High School (1 pitch). This is mainly due to the schools having 3G pitches, and clubs preferring to use 3G due to its reliable availability.

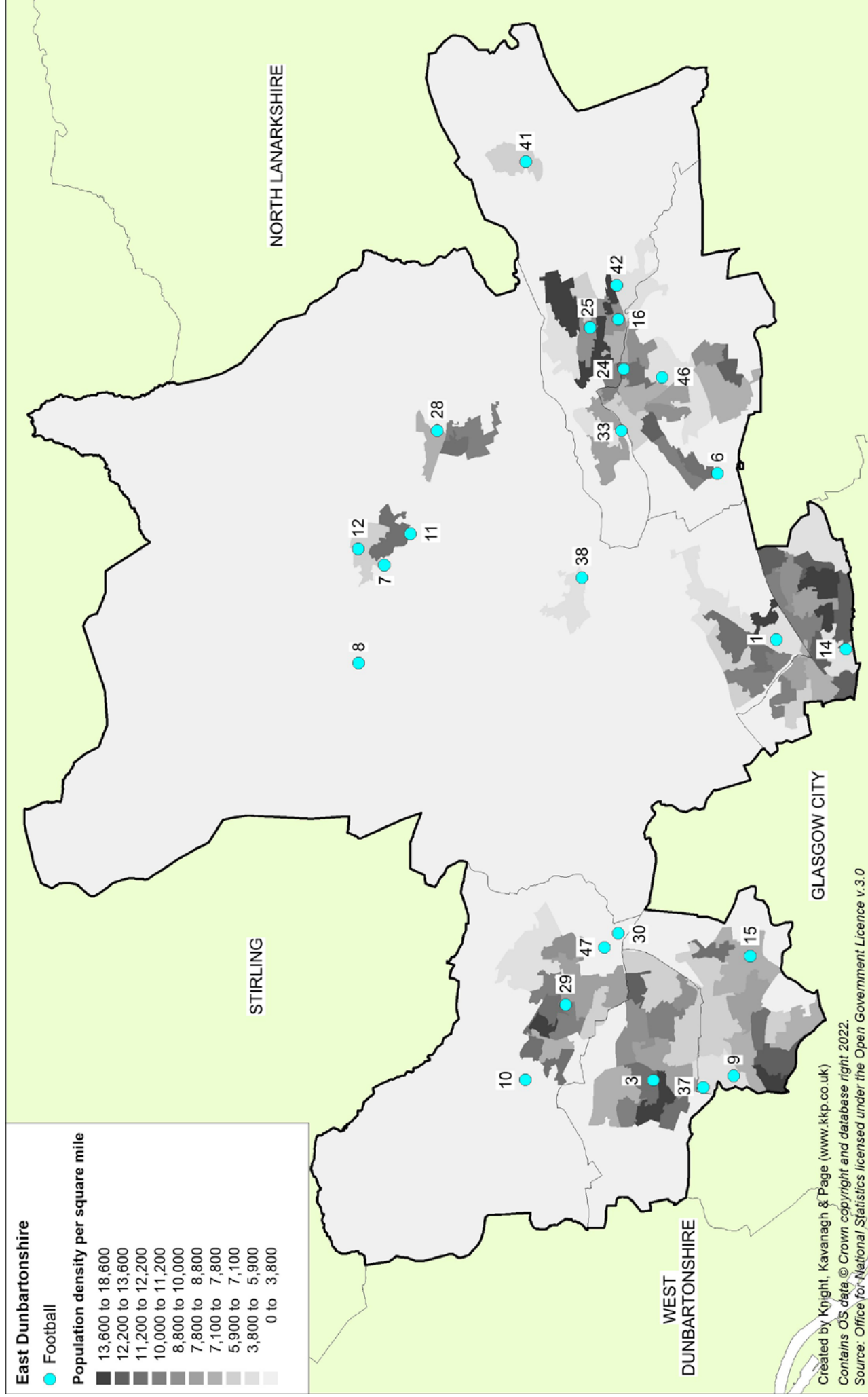
It should also be noted that there has been a small increase in the total grass pitch supply when compared to the previous 2015 PPS (48 compared to 44).

Table 4.2: Grass pitch sites

PPS ID	Site	Area	Pitches	Community availability
1	Allan Glens Rugby Club	Bishopbriggs	1	Yes
3	Bearsden Academy	Bearsden	2	No
6	Boghead Pavilion	Lenzie	2*	Yes
7	Station Road	Lennoxton	1	Yes
8	Celtic Training Ground	Lennoxton	3	No
9	Colquhoun Park Pitches	Bearsden	7	Yes
10	Douglas Academy	Milngavie	1	Yes
11	Ferguson Park	Lennoxton	1	Yes
14	Huntershill Sports Hub	Bishopbriggs	1	Yes
15	King George V Park (Bearsden)	Kirkintilloch	2	No
16	Kirkintilloch High School	Kirkintilloch	1	No
23	Loretto Playing Fields	Bishopbriggs	6	Yes
24	Luggie Park Pavilion	Kirkintilloch	2	Yes
25	Merkland Outdoor Recreation Centre	Kirkintilloch	1	Yes
28	Milton of Campsie Public Park	Milton of Campsie	1	Yes
29	Oakburn Park	Milngavie	1	Yes
30	Rangers Football Academy	Milngavie	6	No
33	St Ninians High School	Kirkintilloch	1	No
37	Thorn Park Pitches	Bearsden	2	Yes
38	Torrance Community Initiative	Torrance	1	Yes
41	Twechar Park	Twechar	1	Yes
42	Waterside Park	Kirkintilloch	1	Yes
46	Whitegates Pitch	Kirkintilloch	1	Yes
47	Auchenhowie Sports Hub	Milngavie	2	Yes
Total			48	

*one pitch is overmarked for rugby

Figure 4.1: Location of football pitches



Pitch quality

The quality of football pitches in the district was assessed via non-technical assessments (as determined by PPS Guidance from national sports agencies). Assessment criteria consider elements such as grass coverage, evenness of pitch, line markings, goal posts etc. An example of the template used to assess provision is provided in **Appendix C**. Users were also consulted to establish their views towards quality of provision.

The percentage parameters used for the non-technical assessments were as follows; Good (>80%), Standard (50-80%), Poor (< 50%). Pitch quality is used primarily to influence the carrying capacity of the sites. Table 4.2 summarises the quality of grass pitches available for community use (33 pitches).

Table 4.3: Pitch quality assessments (community use pitches)

Adult pitches			Youth pitches			Mini pitches		
Good	Standard	Poor	Good	Standard	Poor	Good	Standard	Poor
20	6	3	-	1	-	-	3	-

The quality of grass pitches across the Authority is generally good. Twenty adult pitches are rated good, six are rated standard and three are rated poor. The poor pitches are: Twechar, Luggie Park (1 pitch) and Whitegates. All youth and mini pitches are identified in East Dunbartonshire as standard.

Most matches are played on 3G pitches which can cope with significant use. All key areas of population have 3G provision and demand for grass appears to be reducing. This trend is also related to the impact of weather-related match cancellations on grass pitches and the greater reliability, albeit at greater cost, of 3G. This is leading to fixtures being switched from grass to 3G. Youth football growth may also be a factor as there is more match play demand (for 3G) as these pitches can cope with more games per week.

Club consultation indicates that the majority of grass pitches are of good quality; this reflects the investment in sites since the last study. EDC has invested c.£1m in football improvements at key sites. This includes:

- Boghead pitches - £200K worth of drainage improvements.
- Oakburn pitch drainage works - £30K.
- Station Road pitch improvements - £50K.
- New second grass pitch at Luggie & replacement pitch at Waterside (and upgrades at both pavilions) - £420K.

Comments were, however, received about specific sites.

Table 4.4: Pitch quality club comments

Site	Club comments
Oakburn	Heavily used by Milngavie FC which reduces the quality.
Twechar	Frequently called off as drainage is poor
Whitegates	Waterlogs at the slightest opportunity- with games called off regularly.
Luggie Park Pavilion	Second pitch at site floods, with matches regularly called off.

Match cancellations

The average percentage of matches played on grass from 2023-2024 (across the Authority) was 53% per weekend. Sites where matches were regularly called off (i.e. under 50% of utilisation per year) include:

- Boghead Pitch – overmarked pitch
- Luggie Park Pavilion – both pitches
- Whitegates
- Waterside
- Milton of Campsie
- Ferguson pitch
- Station Road
- Thorn Park- pitch two
- King George V Playing Fields - pitch one

Club consultation matches with the percentage of match cancellations, particularly those at Luggie Park Pavilion, Whitegates and Waterside.

These cancellation levels are despite a grounds-maintenance regime being in place and they appear to be related to climate change impacts and changes to how rainfall occurs, with more frequent heavy rainfall over shorter periods of time.

The Met Office says that as the atmosphere warms as a result of climate change, it can retain more moisture at a rate of around 7% for every degree of warming. The pattern explains how many regions in the world show an increase in the amount of rain experienced and that the UK is likely to see more days with rainfall totals over 50mm, particularly in the west.

Scotland's summer of 2023 was the fifth warmest and July the eight wettest on record, going back 187 years, with fifty percent more rainfall than normal. As an example, on June 20 during a European Men's Football qualifier between Scotland and Georgia at Hampden Park 10 days' worth of rain fell in one hour.

For only the second time since 2015 the UK saw two named storms in the month of August, and nine flood alerts were issued in September of 2023. Scotland also saw most rainfall in October from Atlantic fronts, with October 6th and 7th the wettest two-day period on record for Scotland in a series from 1891.

Ancillary facilities

In addition to assessing the quality of pitch provision, assessments were also undertaken to establish the quality of ancillary facilities (i.e. changing accommodation). An example of the template used to assess provision is provided in **Appendix C**. The table below sets out the quality ratings of provision. Four sites rate poor (internally and/or externally); Colquhoun Pavilion, Milton of Campsie Pavilion, King George V Pavilion and Thorn Park Pavilion.

All four have been identified for investment. No timescale has been set for this as yet. Colquhoun Pavilion is subject to a feasibility for replacement, due to asset fabric failing and net zero non-compliance. Merkland Recreation Centre is also identified for a feasibility due to fabric issues, net zero non-compliance, and child protection issues. King George V Pavilion is currently closed and requires modernising.

Table 4.5: Quality of changing accommodation

Site	Changing facility quality	
	Exterior	Interior
Bearsden Academy	Good	Good
Boghead Pavilion	Adequate	Good
Colquhoun Pavilion	Poor	Poor
Douglas Academy	Good	Good
High Park Pavilion	Good	Good
Huntershill Sports Hub	Good	Good
Kirkintilloch High School	Good	Good
King George V Pavilion	Poor	Adequate
Luggie Park Pavilion	Good	Good
Merkland Recreation Centre	Good	Adequate
Milton of Campsie Pavilion	Adequate	Adequate
Oakburn Pavilion	Poor	Adequate
Station Road Pitch	Good	Adequate
St Ninian's High	Good	Good
Thorn Park Pavilion	Poor	Poor
Torrance Community Initiative	Adequate	Adequate
Twechar Pitch	Good	Good
Waterside Pavilion	Good	Good

Grass pitch hire and costs

The maximum cost for an adult pitch and changing facilities from EDLC is £58.90, with the cost of a youth pitch priced at £29.50. The cost to hire a single adult pitch with no changing facilities is £34.30.

These appear to be slightly higher than the charges levied in the neighbouring authorities of West Dunbartonshire and North Lanarkshire. The charge for an East Dunbartonshire pitch, however, is for three hours, whereas for the other two authorities, hire time is two hours.

Table 4.6: Grass Football pitch hire costs

Organisation	Adult teams	Youth teams
EDLC (including changing facilities & for a 3-hour let period; 09.00-12.00 or 13.00-16.00) - match rate.	£58.90	£29.50
West Dunbartonshire Council (2 hour let period)	£41.50	£20.00
North Lanarkshire Council (including changing facilities) - 2 hour let period	£47.90	£23.95

Table 4.7: Cost per hour comparison

Organisation	Adult teams per hour cost	Youth teams per hour cost
East Dunbartonshire Leisure & Culture Trust (including changing facilities & for a 3-hour let period; 09.00-12.00 or 13.00-16.00) - match rate.	£19.63	£9.83
West Dunbartonshire Council (2 hour let period)	£20.75	£10.00
North Lanarkshire Council (including changing facilities) - 2 hour let period	£23.95	£11.98

Future development

Two new 3G pitches are being installed this year (2024). The first is funded by EDC and will be run by EDCLT. This is at High Park, and will replace an existing grass pitch. It is scheduled to open in April 2024.

The second is being built on a derelict brownfield site to the west of Park Burn in the town's Southbank area of Kirkintilloch. EDC is funding the project; however, details related to pitch management are still to be finalised. It is anticipated that this will open during 2024.

4.3: Demand

Through the audit and assessment, a total of 197 teams are identified as playing competitive football matches within East Dunbartonshire. This comprises 23 adult, 83 youth and 91 mini soccer teams.

Table 4.8: Summary of competitive teams currently playing

No. of teams playing					Total
Adult	Youth 11v11	Youth 9v9	Mini 7v7	Mini 5v5	
23	51	32	46	45	197

The highest number of teams; 91, fall into the mini format categories (7v7 and 5v5), followed by youth (youth 11v11 and youth 9v9) (83 teams) and then adult (23 teams). A breakdown of teams by club is set out in **Appendix A**.

When comparing the number of teams with those in place at the point when the previous PPS was conducted, there have been increases across all formats.

Table 4.9: Percentage change per team since the previous PPS

Team type	Team numbers		
	2015	2023	Percentage increase
Adult	21	25	14.2
Youth	59	83	40.6
Mini	90	92	2.2

The largest increase is in the youth age range, which has seen a 40% increase in team numbers. This has, however, not yet lead to a significant increase in adult 11v11 football.

One reason that an increase in mini and youth teams does not always lead to an increase in the number of adult teams is that nationally the number of 11-a-side adult men's teams is decreasing due, in part, to many people opting to play small-sided versions of the game.

The way in which people, especially adult men, wish to play football is changing. People want to be able to fit it into their busy lifestyle and small-sided formats and shorter games allow players to do this. This trend may increase demand for more access to STP provision.

Displaced demand

The survey and consultation reveals that some clubs and teams are currently 'displaced'. Phoenix FC currently plays all its matches at Glasgow Club Scotstoun having reportedly struggled to secure pitch time in East Dunbartonshire. Other examples are Milngavie U15s which plays at Balfron Sports Facility in Stirling and Harestanes which plays some matches in North Lanarkshire. Rosebank teams play in North Lanarkshire and Falkirk areas when unable to secure a playable pitch in East Dunbartonshire.

Future demand

Population increases

Team generation rates (TGRs) are used as the basis for calculating the number of teams likely to be generated in the future based on population increase ¹.

It should be noted that an increase in households through residential developments does not necessarily directly equate to a matching population increase. For the purposes of this process, TGRs are calculated until 2030, as agreed with the EDLC and EDC.

Table 4.10: Team generation rates

Age group	Team generation rate	No. of new teams generated by the new population	No. of new teams generated by the new population - rounded figure	Match equivalent session per week
Adult men (18-45)	1:1210	1.62	1	0.5
Adult women (18-45)	1:1442	0.25	0	0
Youth boys (13-15)	1:54	4.13	4	2
Youth girls (13-15)	1:300	1.00	1	0.5
Youth boys (9-12)	1:55	0	0	0
Youth girls (9-12)	1:232	0.12	0	0
Mini Mixed (6-8)	1:32	0	0	0
Mini Mixed (5-7)	1:290	0	0	0

Future population projections forecast increases in demand for football across three age groups. These include adult and youth 11v11 (boys and girls) formats. The TGRs do not predict increases for any other age groups.

¹ Data source: 2021 Mid-year population estimates for Scotland

4.4: Capacity analysis

Pitch capacity to regularly accommodate competitive play and other activity over a season is most often determined by quality. As a minimum, the quality and therefore the capacity of a pitch affects the playing experience and people's enjoyment of playing football. In extreme circumstances it can lead to a pitch being unable to cater for all or certain types of play during peak and off-peak times. Pitch quality is heavily influenced by weather conditions and drainage.

PPS guidance sets a standard number of matches that each grass pitch type should be able to accommodate without adversely affecting its current quality (pitch capacity).

Demand is only based on match play and does not take into account training as it is understood that no training takes place on grass pitches. (this is mainly due to the majority of grass pitches not being floodlit and training largely taking place in the evening in winter months). Taking guidelines on capacity into consideration the following was concluded in East Dunbartonshire:

Table 4.11: Pitch capacity levels

Adult pitches		Youth pitches		Mini pitches	
Pitch quality	Matches per week	Pitch quality	Matches per week	Pitch quality	Matches per week
Good	3	Good	4	Good	6
Standard	2	Standard	2	Standard	4
Poor	1	Poor	1	Poor	2

Table 4.12 applies the above pitch ratings to the actual level of weekly play recorded to determine a capacity rating as follows:

Table 4.12: Pitch capacity ratings

Potential capacity	Play is below the level the site could sustain
At capacity	Play matches the level the site can sustain
Overused	Play exceeds the level the site can sustain

Peak time

The peak time varies for different formats of the game. Most adult football is played on Saturday afternoons with some play occurring at other times. For Youth 11v11 the peak period is Saturday mornings.

Spare capacity

The next step is to ascertain whether or not any identified 'potential capacity' can be deemed to be 'spare capacity'. There are situations where, although a site is highlighted as potentially able to accommodate additional play, this cannot be recorded as spare capacity. For example, a particular pitch may be managed to regularly operate slightly below full capacity to ensure that it can cater for regular friendly matches and other activities that take place but are difficult to quantify on a weekly basis.

Table 4.13: Grass Football pitch capacity and spare capacity analysis

Site ID	Site name	Available for community use?	Management	Area	Pitch type	Quality rating	No. of pitches	Current play	Site capacity	Overused (+), At Capacity (/) or Potential to Accommodate additional play (-)	Pitches available in peak period	Match equivalent sessions in peak period	Comments
1	Allan Glen Sports Club	Yes	Club	Bishopbriggs	Adult	Standard	1	0	2	-2	1	0	Over marked on a rugby pitch therefore any spare capacity is discounted.
3	Bearsden Academy	No	School	Bearsden	Adult	Standard	2	0	4	-2	2	0	Pitch not used for community use- only available for school use.
6	Boghead Pavilion	Yes	EDLC	Lenzie	Adult	Good	2	2.5	6	-3.5	0	0	No spare capacity at the site.
7	Station Road	Yes	EDLC	Lennoxtown	Adult	Good	1	0	3	-3	1	1	Spare capacity in the peak period.
9	Colquhoun Pavilion	Yes	EDLC	Bearsden	Adult	Good	7	5.5	21	-15.5	2	1.5	Spare capacity equating to 1.5 match sessions per week.
10	Douglas Academy	No	School	Millngavie	Adult	Poor	1	1	2	-1	0	0	Pitch not used for community use- only available for school use.
11	Ferguson Pitch	Yes	EDLC	Lennoxtown	Adult	Good	1	0	3	-3	1	1	Spare capacity in the peak period.
14	Huntershill Recreation Centre	Yes	EDLC	Bishopbriggs	Adult	Good	1	0	3	-3	1	1	Spare capacity in the peak period.

Site ID	Site name	Available for community use?	Management	Area	Pitch type	Quality rating	No. of pitches	Current play	Site capacity	Overused (+), At Capacity (/) or Potential to Accommodate additional play (-)	Pitches available in peak period	Match equivalent sessions in peak period	Comments
15	King George V	Yes	EDLC	Bearsden	Adult	Standard	2	0.5	4	-3.5	0	1.5	Spare capacity identified in the peak period equating to 1.5 match sessions per week.
16	Kirkintilloch High School	No	School	Kirkintilloch	Youth 11v11	Good	1	0	-4	-4	1	0	Pitch not used for community use- only available for school use.
23	Loretto Playing Fields	Yes	St Mungos AFC	Bishopbriggs	Adult	Good	4	0.5	12	-11.5	0	3.5	Spare capacity identified in the peak period equating to 3.5 match sessions per week.
23	Loretto Playing Fields	Yes	St Mungos AFC	Bishopbriggs	Mini 7v7	Standard	1	3	4	-1	0	0	No spare capacity at the site.
23	Loretto Playing Fields	Yes	St Mungos AFC	Bishopbriggs	Mini 5v5	Standard	1	4	4	0	0	0	No spare capacity at the site.
24	Luggie Park	Yes	EDLC	Kirkintilloch	Adult	Good	1	0	3	-3	1	1	Spare capacity in the peak period.
24	Luggie Park	Yes	EDLC	Kirkintilloch	Adult	Poor	1	0	1	-1	1	1	Pitch subject to flooding- not recommended for matches
25	Merkland Recreation Centre	Yes	EDLC	Kirkintilloch	Adult	Good	1	2.5	3	-0.5	0	0	No spare capacity at the site.
28	Milton of Campsie	Yes	EDLC	Milton of Campsie	Adult	Standard	1	0	2	-2	1	1	Spare capacity in the peak period.

Site ID	Site name	Available for community use?	Management	Area	Pitch type	Quality rating	No. of pitches	Current play	Site capacity	Overused (+), At Capacity (/) or Potential to Accommodate additional play (-)	Pitches available in peak period	Match equivalent sessions in peak period	Comments
29	Oakburn Park	Yes	EDLC	Milngavie	Adult	Standard	1	2	2	0	0	0	No spare capacity at the site.
33	St Ninian's High School	No	School	Kirkintilloch	Youth 11v11	Good	1	0	4	-4	0	0	Pitch not used for community use- only available for school use.
37	Thorn Park	Yes	EDLC	Bearsden	Adult	Good	2	1	6	-5	1	1	No spare capacity at the site.
38	Torrance Community	Yes	Voluntary	Torrance	Adult	Standard	1	0	2	-2	1	1	Spare capacity in the peak period.
30	Twechar	Yes	EDLC	Twechar	Adult	Poor	1	0	1	-1	1	1	Spare capacity in the peak period.
42	Waterside Pavilion	Yes	EDLC	Kirkintilloch	Adult	Good	1	0	3	-3	1	1	Spare capacity in the peak period.
46	Whitegates	Yes	EDLC	Kirkintilloch	Adult	Poor	1	0	1	-1	1	1	Spare capacity in the peak period.
47	Auchenhowie Sports Hub	Yes	Club	Milngavie	Mini (5v5)	Standard	1	1	2	-1	1	0	No spare capacity at the site.
47	Auchenhowie Sports Hub	Yes	Club	Milngavie	Youth (9v9)	Standard	1	1	2	-1	0	0	No spare capacity at the site.

4.5: Supply and demand analysis

Actual spare capacity has been aggregated up (highlighted as green in the comments column in the table above) by area and by pitch type.

Table 4.14: Actual spare capacity summary

Area	Actual spare capacity (match sessions per week)				
	Adult	Youth (11v11)	Youth (9v9)	Mini (7v7)	Mini (5v5)
Bearsden	4				
Bishopbriggs	4.5				
Kirkintilloch/ Lenzie	4				
Lennoxton	2				
Lenzie	0				
Milngavie	0				
Milton of Campsie	1				
Torrance	1				
Twechar	1				
EAST DUNBARTONSHIRE	17.5				

The table shows a total of 17.5 match sessions of actual spare capacity (all on adult pitches). In addition, nine sites are available for community use but accommodate no recorded play across the duration of the study period:

- Station Road (one good adult pitch).
- Ferguson Pitch (one good adult pitch).
- Huntershill Recreation Centre (one good adult pitch).
- Luggie Park (one good adult pitch and one poor pitch).
- Milton of Campsie (one standard adult pitch).
- Torrance Community Initiative (one standard youth pitch).
- Twechar (one poor adult pitch).
- Waterside Pavilion (one good youth pitch).
- Whitegates (one poor adult pitch).

Overplay

Overplay occurs when there is more play accommodated on a site than it is able to sustain (which can often be due to the low carrying capacity of the pitches). The 2024 PPS recorded no sites as being overplayed. This is an improvement compared to the previous study where two sites were shown as being overplayed. Arguably, this is due to the increase in 3G provision. For example, Huntershill Sports Hub now plays at a double hub 3G provision compared to the single 3G pitch facility noted in the previous study. As noted above, waterlogged pitches and heavy rainfall may also be forcing teams onto 3G pitches.

4.6: Conclusions

Having considered supply and demand, the tables below identify the actual spare capacity in each of the formats, (based on match equivalent sessions) the future demand and whether there are any shortfalls in any formats.

Table 4.15: Summary of demand for adult pitches – whole of East Dunbartonshire

Area	Actual spare capacity ²	Demand (match equivalent sessions)			
		Overplay	Current total	Future club demand	Total
Adult	17.5	0	17.5	0.5	17
Youth (11v11)	0	0	0	2.5	-2.5
Youth (9v9)	0	-	-	-	0
Mini (7v7)	0	-	-	-	0
Mini (5v5)	0	-	-	-	0

In conclusion, there is sufficient supply of grass football pitches to meet current and future levels of demand - partly due to the fact that most youth and mini football matches are played on 3G. When considering future demand, a small shortfall emerges on youth 11v11 pitches. These can be addressed via the reconfiguration of adult pitches – for which there is a high level of spare capacity - or via making increased use of 3G pitches.

Whilst there is sufficient current and future supply and demand, there is the need to enhance changing provision at sites which are rated as poor (both internally and externally) and address any issues with grass pitch sites which are rated as poor.

Football summary

- There are 47 football pitches in East Dunbartonshire. The majority are available for community use (33 pitches).
- Overall, community accessible pitch quality rates good. Most adult sites are good, while six are rated standard and only two poor. All mini and youth pitches are rated standard. This reflects recent invest in a number of sites, with the aim to improve drainage.
- Most mini and youth matches are played on 3G.
- 197 teams play within East Dunbartonshire. When compared to the previous PPS, the largest increase (c.40%) has been in youth football.
- There are four poor rated changing facilities - at Colquhoun Pavilion, Milton of Campsie Pavilion, King George V Pavilion and Thorn Park Pavilion. Colquhoun, Thorn and Merkland. Pavilion (rated as average) have been identified within EDC capital programme investment.
- Minor growth in adult and youth 11v11 teams is predicted based on population growth. There is spare capacity (particularly on adult pitches) across the authority. Several pitches which are not available for community use.
- On this basis, there is sufficient pitch provision to meet current and future demand.
- The focus needs to be on addressing site specific quality issues to enable current and future demand from clubs to be satisfied.

² In match equivalent sessions

PART 5: RUGBY UNION

5.1: Introduction

Scottish Rugby (SR) administers development, coaching, governance and competitions in rugby union in Scotland. The three clubs based in East Dunbartonshire are:

- Allan Glens RFC
- Lenzie RFC
- West of Scotland RFC

Club consultation

Clubs were notified by email and invited to provide their views on rugby union provision in East Dunbartonshire via a survey hosted on EDLC's website. One responded.

5.2: Supply

In total, eight senior rugby union pitches are located at four sites in East Dunbartonshire. There are also three World Rugby compliant 3G pitches in the Authority. These are:

- West of Scotland RFC (full sized).
- Lenzie Academy (junior sized).
- Huntershill Sports Hub (full sized).

All are available for community use.

Table 5.1: Summary of senior grass rugby union pitches

No. of sites	No. of available pitches
4	9

Table 5.2 List of rugby sites

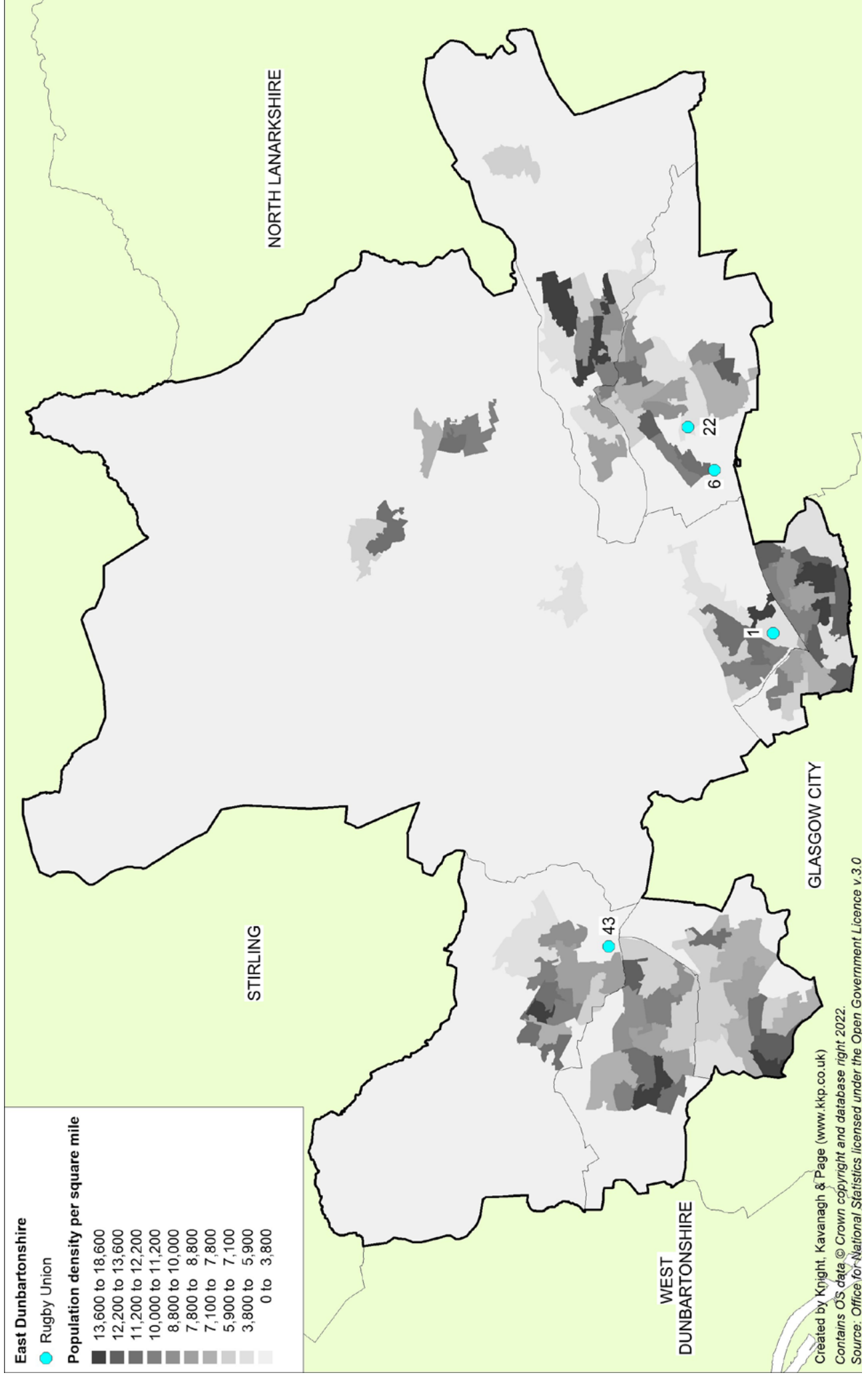
PPS ID	Site	Number of pitches	Area
1	Allan Glens Rugby Club	3	Bishopbriggs
6	Boghead Pavilion	2	Lenzie
22	Lenzie Rugby Club	2	Kirkintilloch
43	West of Scotland Football Club	2	Milngavie

Allan Glens RFC runs three senior teams, five junior teams and six mini teams. It has three senior rugby pitches, two used exclusively for rugby union and the third which is available for rugby and football.

Lenzie RFC has two senior pitches, neither is floodlit. Its two adult teams play on Saturday afternoons. It also runs seven junior teams and six mini teams.

West of Scotland RFC, the largest of the three clubs in the area, plays at the highest level in the national leagues. It has two senior rugby union pitches, one with a covered spectator stand and a standalone scoreboard on the main pitch. It runs three senior teams (one female), three junior and six mini teams. It has a full-sized rugby 3G pitch on site.

Figure 5.1: Location of rugby union pitches in East Dunbartonshire



Ownership/management

Both Lenzie RFC and West of Scotland RFC own their home grounds, whilst Allan Glens RFC leases its site. All three are considered to have secure tenure of their respective sites. The remaining pitch at Boghead Pavilion is managed by EDLC.

West of Scotland RFC rents its 3G pitch (predominantly for football to accommodate the demand for junior football). Milngavie Youth FC is the largest club which rents this.

Pitch quality

The methodology for assessing rugby pitch quality considers two key elements; the maintenance programme and the level of drainage on each pitch. An overall quality rating based on both drainage and maintenance is then generated.

The agreed rating for each pitch type also represents actions required to improve pitch quality. A breakdown of actions required based on the ratings can be seen below:

Table 5.3: Definition of maintenance categories

Category	Definition
M0	Action is significant improvements to maintenance programme
M1	Action is minor improvements to maintenance programme
M2	Action is no improvements to maintenance programme

Table 5.4: Definition of drainage categories

Category	Definition
D0	Action is pipe drainage system is needed on pitch
D1	Action is pipe drainage is needed on pitch
D2	Action is slit drainage is needed on pitch
D3	No action is needed on pitch drainage

Table 5.5: Quality ratings based on maintenance and drainage scores:

The table below shows quality ratings for each site in East Dunbartonshire based on non-technical site assessment scores.

Category	Definition
D0	Action is pipe drainage system is needed on pitch
D1	Action is pipe drainage is needed on pitch
D2	Action is slit drainage is needed on pitch
D3	No action is needed on pitch drainage

Table 5.6: Grass pitch site quality ratings

Site ID	Site name	Ownership/ Management	Community use? (club use)	Pitch type	Non tech score	Quality rating	No. of pitches	Comments
1	Allan Glens Sports Club	Private/ sports club	Yes (Allan Glens RUF C)	Senior	M1/ D1	Standard	2	Consultation indicates that drainage has been improved on both adult pitches. In addition, all junior training now takes place at Huntershill Sports Hub 3G pitch, which alleviates pressure on the two main pitches.
1	Allan Glens Sports Club	Private/ sports club		Senior	M1/ D0	Poor	1	Pitch 3 is dual use and is available for rugby and football. However, no football is identified as being played on this pitch.
5	Boghead Pavilion	Council/ EDLC	Yes	Senior	M1/ D1	Standard	2	It also has a second pitch onsite, overmarked with one adult football pitch. At the time of the audit, it was not lined, however, consultation indicates that it is used by Lenzie RFC.
16	Lenzie Rugby Club	Sports club	Yes (Lenzie Rugby Club)	Senior	M1/ D1	Standard	2	Two standard quality senior pitches. The Club considers the standard of the pitches to be ok. It would like to install floodlights on one, but this is considered to be unlikely due to site proximity to local housing. The new 3G pitch at Lenzie Academy has allowed the club to move the training demand and mini matches off the grass pitches. Sunday access raised as a significant issue.
32	West of Scotland Rugby Club	Sports club	Yes (West of Scotland Rugby Club)	Senior	M2/ D1	Standard	2	There are two senior pitches onsite, with a spectator stand beside the main pitch. Previously, the Club noted pitches as good quality with no specific quality issues. It also has a full sized 3G pitch which accommodates the majority of junior training and match play, along with some senior training demand.

Ancillary facilities

All three clubs have access to changing room provision for home games at their main sites. In the last PPS, West of Scotland RFC and Allan Glens RFC rated their home ground changing and ancillary facilities as good. Neither highlighted any issues or problems.

Lenzie RFC is of the opinion that its onsite changing facilities are of poor quality and that this a key issue. Its view is that the changing provision requires a full rebuild to ensure compliance with safeguarding regulations. It estimates that c.£250,000 is required to upgrade these facilities and is in the process of fundraising.

5.3: Demand

Demand for rugby pitches in East Dunbartonshire tends to fall within the categories of organised competitive play, organised training, and casual use.

Competitive play

Three rugby union clubs in East Dunbartonshire run a total of 41 teams; nine senior, 15 junior and 18 mini. West of Scotland runs an adult women's team and three all female junior teams.

Table 5.7: Summary of demand by analysis area

Club	Team type	Team play	No. of rugby union teams		
			Senior	Juniors	Mini
Allan Glens RFC	Club	Saturday pm	2	-	-
Allan Glens RFC	Club	Sunday am	1	2	6
Allan Glens RFC	Club	Sunday pm	-	2	-
Lenzie RFC	Club	Saturday pm	-	-	6
Lenzie RFC	Club	Saturday pm	2	1	-
Lenzie RFC	Club	Sunday am	-	3	-
Lenzie RFC	Club	Sunday pm	-	4	-
West of Scotland RFC	Club	Saturday pm	2	1	-
West of Scotland RFC	Club	Sunday am	1	-	6
West of Scotland RFC	Club	Sunday pm	-	3	-
EAST DUNBARTONSHIRE TOTAL			8	16	18

All senior men's teams play at their respective home grounds on a Saturday afternoon, apart from the Allan Glens RFC third team which plays at Huntershill Sports Hub.

The timing of junior and mini team matches varies depending on the team. Allan Glens RFC junior and minis all play on a Sunday at the home ground in Bishopsbriggs.

Lenzie RFC mini teams play at Lenzie Academy on a Saturday with the juniors playing on a Sunday at the rugby clubs home ground. Lenzie Rugby Club would like more slots at Lenzie Academy to accommodate training and match play and access on a Sunday. The Club struggles to book additional slots as the facility is shared with football.

The Club struggles to accommodate all its teams within available facilities due to only three 3G facilities' being suitable for rugby within the Authority and Lenzie Academy not allowing access on a Sunday. It would ideally like an additional full-sized rugby compliant 3G pitch. As West of Scotland RFC has its own full sized 3G pitch, all juniors and mini play on this pitch on a Sunday.

Training

All three clubs train on one or more of the three-rugby compliant 3G pitches in the Authority. Allan Glens uses Huntershill Sports Hub, Lenzie RFC uses Lenzie Academy and West of Scotland RFC uses its own 3G pitch to cater for its training demand.

Unmet demand

Unmet demand is existing demand that is not getting access to pitches. It is usually expressed, for example, where a team is already training but is unable to access a match pitch or where a league has a waiting list due to a lack of pitch provision, which in turn is hindering its growth. No teams in East Dunbartonshire identify existing unmet demand. However, all three clubs believe that the number of teams they run could be increased if access to more pitches could be gained.

Future demand

Team generation rates are used below as the basis for calculating the number of teams likely to be generated in the future based on population growth.

Table 5.8: Team generation rates

Age group	Team generation rate	No. of new teams generated by the new population	No. of new teams generated by the new population - rounded figure	Match equivalent session per week[1]
Men (19-45)	1: 15,140	1.00	1	0.5
Women (19-45)	1: 15,420	0.06	0	0
Boys (13-18)	1: 3,760	1.58	2	1
Girls (13-18)	1: 3,360	1.13	1	0.5
Mixed (7-12)	1: 7,680	0.27	0	0

Future population projections forecast an increase in demand for grass rugby union pitches at both men's, and youth (both boys and girls) age groups. No increase in pitch demand at other age groups is predicted.

5.4: Capacity analysis

The capacity for pitches to regularly accommodate competitive play, training and other activity over a season is most often determined by quality. As a minimum, the quality, and therefore the capacity, of a pitch affect the playing experience and people's enjoyment of playing rugby. In extreme circumstances it can result in the inability of the pitch to cater for all or certain types of play.

- To enable an accurate supply and demand assessment of rugby pitches, the following assumptions are applied to site by site analysis:
- All sites that are used for competitive rugby matches (regardless of whether this is secured community use) are included on the supply side.
- All competitive play is on senior sized pitches (except where mini pitches are provided).
- From U13 upwards, teams will look to play 15v15 and use a full pitch (smaller-sided team sizes can be accommodated if required).
- Mini teams (U7-12) play on half of a senior pitch i.e. two teams per senior pitch.
- For senior and youth teams the current level of play per week is set at 0.5 for each match played based on all teams operating on a traditional home and away basis (assumes half of matches will be played away).
- For mini teams, play per week is set at 0.25 for each match played based on all teams operating on a traditional home and away basis and playing on half of one adult pitch.
- All male adult club rugby takes place on a Saturday afternoon.
- Most U13-18 rugby takes place on a Sunday morning .
- Training on club pitches is reflected by the addition of team equivalents.

In England, the RFU sets a standard number of matches that each pitch should be able to accommodate. Capacity is based upon assessments of drainage systems and maintenance programmes ascertained via a combination of the quality assessment and the club survey:

Table 5.9: Pitch capacity (matches per week) based on quality assessments

		Maintenance		
		Poor (M0)	Adequate (M1)	Good (M2)
Drainage	Natural inadequate (D0)	0.5	1.5	2
	Natural adequate or pipe drained (D1)	1.5	2	3
	Pipe drained (D2)	1.75	2.5	3.25
	Pipe and slit drained (D3)	2	3	3.5

This guide should only be used as a very general measure of potential pitch capacity and does not account for specific circumstances at time of use and assumes average rainfall plus an appropriate end of season rest and renovation programme. The figures are based upon a pipe drained system at 5m centres that has been installed in the last eight years and a slit drained system at 1m centres completed in the last five years.

Peak period

In order to fully establish actual spare capacity, the peak period needs to be established. Peak time for senior rugby union matches in East Dunbartonshire is Saturday afternoons with youth and mini teams playing on Sundays on senior pitches. Therefore, the peak time for requirement of senior pitches is actually Sundays, but not for senior rugby as the majority of demand emanates from youth and mini teams.

Table 5.10: Rugby union provision and level of community use within East Dunbartonshire

Site ID	Site name	Available for community use?	Security of tenure	Pitch type	Quality rating	No. of pitches	Match equivalent sessions ¹ (per week)	Site capacity (sessions per week)	Capacity rating	Comments
1	Allan Glens Sports Club	Yes	Secure	Senior	M1 / D1 (standard)	2	2	4	-2	Two standard quality senior pitches used for senior matches.
1	Allan Glens Sports Club	Yes	Secure	Senior	M1 / D0 (poor)	1	0	1.5	1.5	Pitch 3 is a dual use pitch and is available for both rugby union on Sunday mornings and football, however, there is no recorded football on it currently. It is used occasionally by Allan Glens' third adult team, however, the pitch is poor, so the team often plays at Huntershill Sports Hub, particularly in the winter months. It is calculated as unused.
5	Boghead Pavilion	Yes	Secure	Senior	M1/D1 (standard)	2	0.5	4	-3.5	Two standard quality pitches which supports Lenzie U18s home matches. One pitch is overmarked with football.
16	Lenzie Rugby Club	Yes	Secure	Senior	M1 / D1 (Standard)	2	4.5	4	0.5	Two standard quality pitches. Used by both senior teams and junior teams for matches over a weekend period.
32	West of Scotland Rugby Club	Yes	Secure	Senior	M2 / D1 (Standard)	2	2	5	-3	Two standard quality senior pitches used for senior matches on Saturdays and Sundays. All other matches are played on the 3G pitch. Sunday access highlighted as significant issue by Club.

5.5: Supply and demand analysis

Spare capacity

The next step is to ascertain whether identified 'potential capacity' can be deemed 'actual capacity'. There can be situations where, although a site is highlighted as potentially able to accommodate it cannot be recorded as providing spare capacity. For example, it may be managed to operate slightly below full capacity to ensure that it can cater for regular friendly matches and activities that take place but are difficult to quantify on a weekly basis.

Two sites have spare capacity: Allan Glens Sports Club and West of Scotland Rugby Club.

The lack of spare capacity at Lenzie Rugby Club is due to the new 3G pitch at Lenzie Academy not being full-sized or open on a Sunday. Thus, all its junior matches are played on grass pitches on Sundays. This contrasts with the other clubs, which can access a full size 3G pitch for matches if required.

Overplay

One pitch at Lenzie Rugby Club is overplayed by a total of 0.5 match equivalent sessions per week. Were quality improvements to be undertaken to Lenzie's grass pitches, overplay would be eliminated. Opening the 3G pitch on Sundays for use by its academy would also alleviate overplay, as some juniors could play matches on artificial turf, rather than grass.

Table 5.11: Sites overplayed

Site ID	Site name	No. of pitches	Capacity rating
1	Lenzie Rugby Club	2	0.5

5.6: Conclusions

There is sufficient capacity to support all three rugby clubs in the Authority. Overplay at Lenzie Rugby Club could be addressed by improving pitch quality or were Lenzie Academy to open on a Sunday to accommodate junior teams. Other key challenges are to support clubs with their ancillary facilities. Lenzie considers its changing facilities to be antiquated and unsuitable for the modern game and it is seeking investment to help it upgrade them.

Rugby union summary

- There are nine senior rugby union pitches (on four sites) across East Dunbartonshire. All are available for community use.
- Eight are assessed as standard quality. One is rated as poor (Allan Glens Sports Club).
- There are three rugby compliant 3G pitches, which clubs access for training and matches.
- Lenzie RFC rates the changing facilities at its site as poor quality and highlights a desire to provide better changing rooms to accommodate girls' teams.
- The three clubs field a total of 41 teams; a slight increase (four teams) from the 2015 PPS.
- Allan Glens Sports Club and West of Scotland Rugby Club have spare capacity.
- Lenzie Rugby Club's pitches are overplayed by a total of 0.5 match sessions per week. This is mainly due to the Club being unable to access Lenzie Academy 3G pitch on a Sunday to support its junior programme. Either improving pitch quality or allowing access to the school will address this shortfall
- Overall, there are sufficient pitches to service current and future demand.

PART 6: HOCKEY

6.1: Introduction

Hockey in Scotland is governed by Scottish Hockey (SH). Competitive league hockey matches can only be played on sand based, sand dressed or water-based pitches. Although 40mm 3G is considered suitable for some recreational and school use this surface is not suitable for club matches.

It is considered that a hockey pitch can accommodate a maximum of four matches on the peak day (Saturdays), provided that it is appropriately floodlit.

Club consultation

Western Wildcats HC is the only community hockey club in East Dunbartonshire.

6.2: Supply

The two full-sized competitive hockey suitable STPs in East Dunbartonshire (one sand based the other water based) are shown below. See STP Part 7 for full details on all types of STPs. A summary of hockey suitable STPs is shown below:

Table 6.1: STPs suitable for hockey

ID	Site name	Surface type	Quality
8	Douglas Academy	Sand dressed	Standard
20	Auchenhowie Sports Hub	Water based	Good

The 2015 PPS noted the sand-dressed pitch at Boclair Academy, however, this has been converted to 3G.

Quality

Douglas Academy's sand-based pitch is assessed as standard quality, whilst the pitch at Auchenhowie Sports Hub is rated good. Auchenhowie Sports Hub is the home to Western Wildcats HC which, as noted above, is the only hockey club in East Dunbartonshire. The pitch is solely used for hockey training and matches. It was refurbished in 2015 with the support of match funding from sportscotland, which contributed c.£130,000 to the project.

Availability

STPs suitable for hockey in East Dunbartonshire are available for community use at some level but only the pitch at Auchenhowie Sports Club is currently used for club hockey.

The water based STP at Auchenhowie Sports Club is mainly used for club training midweek and for matches at weekends. It caters for the facility needs of Western Wildcats HC as a section of the overarching Auchenhowie Sports Club.

Beyond this, it is available for wider community use - by schools and other clubs or groups. The pitch caters for significant use throughout the week for club training Monday to Thursday and there is a small volume of spare capacity on Friday nights and Sundays. The Club has a long-term lease agreement on the site until 2075 and is considered to have secure tenure.

The STP at Douglas Academy is sand based but not currently used for community use currently. EDC reports that it is available to hire 18.00 – 22.00 during the week and 09.00-16.00 on a Saturday. However, the absence of floodlighting limits its accessibility particularly during winter months. It is also available at weekends, but the lack of floodlighting would limit use to two or three hockey games per day.

6.3: Demand

Western Wildcats runs five senior men's and four senior ladies' teams playing regular fixtures. It also fields ten junior teams; five each at boys and girls level playing occasional festival style tournaments. Both the men's and ladies' sections compete in national leagues. It has a similarly strong junior emphasis and an active involvement in schools. It delivers a series of holiday camps during the Easter and summer holidays to increase junior interest in the sport.

6.4: Supply and demand analysis

Auchenhowie Sports Club is the only venue accessed by the Club. It can accommodate all current demand without the need to access additional pitches. However, there is no spare capacity on Saturdays and so any further growth at senior level will require use of an alternative STP or potentially matches to switch to be played on Sunday if possible.

Demand for junior matches is infrequent and typically occurs on Sundays when there is generally spare capacity. Douglas Academy is a possible alternative venue, located approximately three miles away (or fewer than ten minutes by car). As mentioned earlier, the Douglas Academy pitch is not floodlit which reduces the number of start times available through the day and limit potential for use as an additional training venue in the evenings.

6.5 Conclusions

East Dunbartonshire is adequately provided for with regards to STPs suitable for hockey matches at present. Western Wildcats HC, the only club in the area, is effectively self-sufficient when it comes to facilities requirements, with unrestricted access to its own home pitch throughout the week. At present, the facilities onsite and the available pitches at school sites means there is sufficient provision to accommodate current demand.

Hockey summary

- There are two STPs suitable for competitive hockey within East Dunbartonshire, one water-based and one sand-based.
- The pitch at Auchenhowie Sports Club is rated good quality (and is classed as a FIH certified water-based pitch). The remaining sand-based STP is assessed as standard quality.
- Western Wildcats HC is the only community hockey club in the area and fields nine senior teams as well as a large junior section. It plays at Auchenhowie Sports Club.
- The Douglas Academy pitch does not have any current community use mainly due to it not having any floodlights.
- East Dunbartonshire is adequately provided for with regard to hockey STPs.
- Future demand from Western Wildcats HC may necessitate access to additional pitch space, particularly at senior level due to there being no available peak time capacity at Auchenhowie Sports Club.
- Douglas Academy represents a local alternative should future growth create the need to access an additional venue, although lack of floodlighting will limit the hours available.

PART 7: SYNTHETIC TURF PITCHES (STP)

7.1 Introduction

Several surface types fall under the category of synthetic turf pitches (STP). The three main ones are rubber crumb (third generation turf 3G), sand (filled or dressed) and water based.

Competitive football can take place on 3G surfaces that have been FIFA certified and a growing number of 3G pitches are now used for competitive match play at mini soccer and youth level. Competition at up to (but not including) regional standard can take place on a 40mm pile surface; otherwise, the pitch requires a valid FIFA Two Star Test certification. Football training can take place on sand and water-based surfaces but is not the preferred option.

As noted in the previous section, hockey is played predominantly on sand based/filled or water based STPs. Although competitive play cannot take place on 3G pitches, 40mm pitches may be suitable, in some instances, for beginner training and are preferred to poor grass or tarmac surfaces.

World Rugby produced the Performance Specification for Artificial Grass Pitches for Rugby' more commonly known as 'Regulation 22' that provides the necessary technical detail to produce pitch systems that are appropriate for rugby union (this is also adopted by rugby league). The artificial surface standards identified in Regulation 22 allows matches to be played on surfaces that meet the standard. Full contact activity, including tackling, rucking, mauling and lineouts can take place.

Table 7.1: STP type and sport suitability

Surface	Category	Comments
Rubber crumb	Long pile 3G (60mm with shock pad)	Rugby surface – must comply with World Rugby type 22, requires a minimum of 60mm.
Rubber crumb	Long pile 3G (55-60mm)	Preferred football surface
Rubber crumb	Short pile 3G (40mm)	Acceptable surface for some competitive football
Sand	Sand filled	Competitive hockey and football training
Sand	Sand dressed	Preferred hockey surface and suitable for football training
Water	Water based	Preferred hockey surface and suitable for football training if irrigated.

7.2 Current provision

The table overleaf details current STP supply in East Dunbartonshire. Of the 15 full size STPs, 13 have floodlights. (The exceptions are St Helens Primary and Lenzie Academy) The most common type of surface is 3G, of which there are currently 15 full-sized pitches. Two of these have a rugby compliant shock pad.

As illustrated in Figure 7.1, there is an even distribution, with all key areas of population having access to a pitch.

Figure 7.1: Location of STPs across East Dunbartonshire

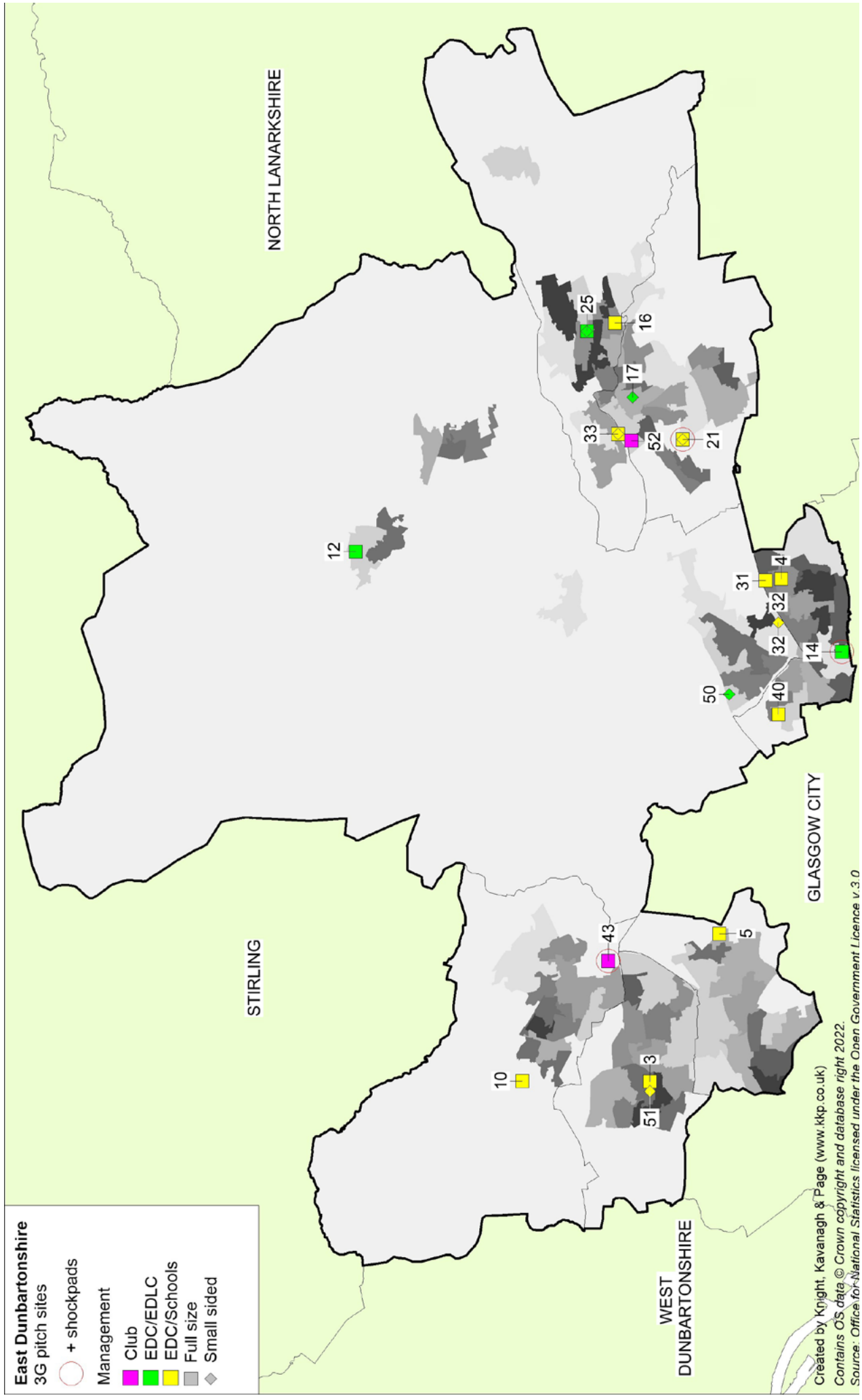


Table 7.2: Full size STPs in East Dunbartonshire

ID	Site	Ownership/ management	No. of pitches	Pitch type	Flood-lights
3	Bearsden Academy	EDC/Schools	1	3G	Yes
4	Bishopbriggs Academy	EDC/Schools	1	3G	Yes
5	Bocclair Academy	EDC/Schools	1	3G	Yes
10	Douglas Academy	EDC/Schools	1	3G	Yes
12	High Park (Lennoxton)	EDC/EDLC	1	3G	Yes
14	Huntershill Sports Hub	EDC/EDLC	1	3G	Yes
14	Huntershill Sports Hub	EDC/EDLC	1	3G*	Yes
16	Kirkintilloch High School	EDC/Schools	1	3G	Yes
21	Lenzie Academy	EDC/Schools	1	3G	No
25	Merkland Outdoor Recreation Centre	EDC/EDLC	1	3G	Yes
31	St Helens Primary School	EDC/Schools	1	3G	No
33	St Ninians High School	EDC/Schools	1	3G	Yes
41	Turnbull High School	EDC/Schools	1	3G	Yes
43	West of Scotland Rugby Club	Club	1	3G*	Yes
52	Kirkintilloch Community Sports Complex	EDC/ Kirkintilloch Community Sports Club	1	3G	Yes

*pitches which have rugby compliant shock pad.

There are also several smaller (not full-sized) STPs mainly located at schools. The rugby compliant 3G pitch facility at Lenzie Academy is heavily used by Lenzie RFC.

Table 7.3: Smaller-sized STPs in East Dunbartonshire

ID	Site name	Ownership/Management	No. of pitches	Pitch type	Floodlit
21	Lenzie Academy	EDC/schools	1	3G*	Yes
32	St Matthews Primary School	EDC/schools	1	5v5	No
44	Wester Cleddens Primary School	EDC/schools	1	5v5	No
25	Merkland Outdoor Recreation Centre	EDC/EDLC	3	2x (5v5) 1X7v7	Yes
21	Lenzie Meadow Primary School	EDC/schools	1	5v5	Yes
17	Kirkintilloch Leisure Centre	EDC/EDLC	4	5v5	Yes
50	The Leisuredrome	EDC/EDLC	4	5v5	Yes
51	St Nicholas' Primary School	EDC/schools	1	5v5	No
33	St Ninians High School	EDC/schools	1	5v5	No

7.3 Availability

Table 7.4 summarises the usage of STPs in East Dunbartonshire. This is taken from an average week in March 2024. In addition, it records the availability of provision within the peak period based on information provided. PPS Guidance recommends an overall peak period for STPs of 34 hours a week (Monday to Thursday 17:00-21:00; Friday 17:00-19:00; Saturday and Sunday 09:00-17:00). This has been applied in conjunction with findings from consultation to provide a total number of hours available for community use per week during peak periods.

A site is considered to offer secure tenure if it is likely to be retained and available for community use for the following three years. Tenure is described as unsecure where there is some uncertainty with regard to the future of the site, potential development, or a change in policy or management.

(Data from High Park and Kirkintilloch Community Sports Complex pitches is not available as both pitches only opened in 2024).

Table 7.4: STP availability defined security of tenure

Site ID	Site name	No. of pitches	Community use?	Opening hours	Weekday - calculated average peak period usage/ noted spare capacity	Weekend - calculated average peak period usage/noted spare capacity per month- (hours)
3	Bearsden Academy	1	Yes	18:30-21:45, Monday-Friday 09:00-16:45 - Saturdays	100%	69% Spare capacity (hours): 28.5
4	Bishopbriggs Academy	1	Yes	18.30-21:45 Monday-Friday 09:00-16:45 - Saturdays	96% Spare capacity: Tuesday 20:00-21:45.	63% Spare capacity (hours): 34.5
5	Boclair Academy	1	Yes	18::30-20:45 - Monday-Friday 09:00-15:45 - Saturdays	100%	70% Spare capacity (hours): 24
10	Douglas Academy	1	Yes	18:30-20:45 Monday-Friday 09:00-15:45 - Saturdays	100%	52% Spare capacity (hours): 45
14	Huntershill Sports Hub	2	Yes	09:30-22:00- Monday -Saturday Saturday-Sunday 09:30-16:15	Both pitches 100% capacity.	Both pitches 100% capacity.
16	Kirkintilloch High School	1	Yes	18.30-21:45 Monday-Friday 09:00-16:45 - Saturdays	81% Spare capacity (slots): (Mon and Thursday 20:15-21:45)	50% Spare capacity (hours): 46.5
20	Lenzie Academy (full sized 3G)	1	Yes	09:00-15:45 - Saturdays	n/a- only available during summer months	85% Spare capacity (hours): 12.25

Site ID	Site name	No. of pitches	Community use?	Opening hours	Weekday - calculated average peak period usage/ noted spare capacity	Weekend - calculated average peak period usage/noted spare capacity per month- (hours)
20	Lenzie Academy (small sided rugby compliant)	1*	Yes	18:30-20:45, Monday-Friday* 09:00-16:45 - Saturdays	40% Spare capacity (slots): 18.30-20.30 Tues, Thurs & Fri	100%
25	Merkland Outdoor Recreation Centre	1	Yes	09:30-22:00- Monday -Saturday Saturday-Sunday 09:30-16:15	83% capacity. Wednesday 18.30-21.00 Thursday 18.30-21.00 Friday 18.30-20.30	50% capacity Spare capacity on Sundays
31	St Helens Primary School	1	Yes	09:00-15:45 - Saturdays	Closed	100%
33	St Ninians High School	1	Yes	18.30-21:45 Monday-Friday 09:00-16:45 - Saturdays	87% Spare capacity (slots): 18.30-20.45	77% Spare capacity (hours): 21.75
40	Turnbull High School	1	Yes	18.30-21:45 Monday-Friday 09:00-16:45 - Saturdays	90% Spare capacity: Friday 20.00-21.45	48% Spare capacity (hours): 48
43	West of Scotland Rugby	1	Yes	Unknown	Unknown	Unknown

*Only one full slot available each night due to closure time of 8:45pm, therefore the late slot 8:15-8:45pm is only ever used if the club on the early slot wants to book it. The club using the pitch book from 6.30-9pm therefore this has been counted as one slot.

The use of 3G facilities across the Authority is strong, as taken from the snapshot in March 2024. All sites report demand for midweek training, with the majority of sites operating above 80% capacity apart from the rugby compliant small-sided rugby 3G pitch at Lenzie Academy. Three sites operate at 100% capacity.

All pitches are used for at least one match per week, some cater for two per weekend, dependant on league requirements.

Lenzie Rugby Club solely use the small-sided 3G at Lenzie Academy during the week, with Lenzie Youth FC using Kirkintilloch School to accommodate training demand. Training slots at Lenzie Academy are longer than the usual slots, which can accommodate several teams, hence the lower percentage usage compared to others. Lenzie Youth FC has requested that floodlights be installed on the football pitch to accommodate its football teams during the week. This would reduce travel to Kirkintilloch.

Small-sided facilities and school sports halls also play a key role accommodating football demand. However, only three small sided 3G pitches (not accounting for Lenzie Academy) have floodlights. All small-sided 3Gs are also used for club coaching activity, particularly Merkland Outdoor Recreation Centre and Kirkintilloch and Leisuredrome leisure centres. Small-sided provision helps meet training demand for some clubs, however, it is also popular with casual bookings. Clubs also block book sports halls in conjunction with 3G pitches, to accommodate the youngest age groups.

The two new full-sized pitches will increase supply in Lennoxton and in Kirkintilloch. The pitch at Lennoxton will provide slots for Campsie FC, Campsie Minerva and Campsie Black Watch, creating capacity at Merkland Outdoor Recreation Centre (which Lennoxton teams currently use). It is likely that the new pitch at Kirkintilloch will primarily be used by adult teams and potentially other youth teams.

Pricing and cost

All of the STPs in East Dunbartonshire are available for community use, yet it should be acknowledged that cost of booking may influence usage of certain sites and possibly causes some to travel outside of their own local community to access a site elsewhere. For example, football clubs with a large number of junior teams can find it hard to identify capacity and pay for training slots for a high number of teams.

When comparing the hire costs (Table 7.6) for full size pitches (mainly for matches), the charges made by the Trust and schools are virtually the same (for a two-hour match slot). There is an operational practice and presentation issue around hiring pitches for training, with EDLC pitches appearing to cost nearly £20 more when comparing adult rates. However, it must be noted that the EDLC hire cost is set for a 90-minute training session, which historically clubs had requested, whereas the schools price is for an hour slot.

Training facility hire costs were generally highlighted in the consultation as a major issue, as clubs would like (what they consider to be) a fairer price across the Authority and beyond. East Dunbartonshire in wider national benchmarking across Scotland is mid-market in price. Table 7.7 illustrates the Scottish mean 3G hire charges per hour:

Table 7.5: Comparison of hire costs for East Dunbartonshire STPs

Site name	3G full pitch 2 hours (match)		3G pitch segment Per 1 hour (training)	
	Basic adult	Concession (junior)	Basic adult	Concession (junior)
EDLC Merkland Recreation and Huntershill Centres 3G (full size)	£120.60	£87.20	£39.60* (1/3 pitch)	£29.40** (1/3 pitch)
All EDC Secondary Schools 3G (full size)	£121.56	£82.88	£40.88 (1/3 pitch)	£28.97 (1/3 pitch)
North Lanarkshire Council 3G (full size)	£90.20	£45.10	£42.50 (1/3 pitch)	£21.25 (1/3 pitch)
West Dunbartonshire 3G (full size)	£108.50	£87.20	£36.50 (1/3 pitch)	£22.00 (1/3 pitch)

*EDLC standard training let is 1.5hrs duration. Cost £59.40

**EDLC standard training let is 1.5hrs duration. Cost £44.10

Table 7.6: Scottish mean full size 3G hire prices

Size of pitch	Type	Cost
3G pitch full size (including changing) per hour	Adult	£65.17
3G pitch full size (including changing) per hour	Concessionary	£41.10
1/3 of full size pitch, 3G per hour	Adult	£40.62
1/3 of full-size pitch, 3G per hour	Concessionary	£25.26

Key challenges

The following key challenges were identified.

The main issue highlighted by clubs was access to school based 3G pitches on a Sunday. As demonstrated above, most existing 3G pitches are well-used. However, only the EDLC operated pitches along with West of Scotland pitch are available on a Sunday, with no school pitches available. This is a particular issue for women and girls' football as the majority of leagues play on a Sunday.

The EDC schools' contract to manage the hire of 3G pitches along with other sports facilities was established in 2009. In this it was agreed that pitches would be available from Monday to Saturday. This contract is established for 30 years until 2039. There is the scope to open certain schools on a Sunday, however, operational staff would be needed (and may have to be paid at a higher rate). This has not yet been explored; however, questions remain about whether staff would work an extra day, whether clubs would be willing to pay a higher hire fee (if applied) and whether bookings be sufficiently regular to make this viable. Currently, there appears to be no scope to change the contract.

This creates specific issues in the west of the Authority, as all the full sized EDLC 3G pitch facilities available on Sundays are located in the east/south. Clubs such as Milngavie and Bearsden struggle to access facilities to complete fixtures resulting in backlogs and them having to play outside the Authority (e.g., Milngavie U15s which plays matches at Balfron Sports Facility in Stirling).

Consultation indicated an imbalance of full-sized 3G pitches in the Authority, with a greater supply in the east. This is borne out by the fact that facilities such as Douglas Academy and Bearsden Academy operate at capacity. Clubs such as Milngavie struggle to access provision for all their teams, with some of them having to train elsewhere. A request was made to increase capacity to address this, through opening of some small facilities or building a new full-sized pitch.

The third concern of clubs is the variation in hire prices, particularly for training slots mid-week. There is a perceived discrepancy between Trust and school pitches, making it more desirable for clubs with younger age groups to secure the shorter duration school slots as opposed to the EDLC sites for key training nights (such as Tuesday and Thursday). As explained earlier, the difference between schools and EDLC prices is due to the hire time offered. When comparing hourly rates, the cost is almost identical (EDLC- £39.60*, EDC Schools- £40.88) for an hour adult 1/3 of a pitch training slot. Similarly, Trust and Council junior prices per hour are £29.40** and £28.97 respectively.

Finally, there is some demand to provide access for facilities for recreational/casual informal football. However, it is worth noting there is also a contrasting viewpoint from both some of the organised team sports representatives who pay to hire facilities and facility operators which expresses concerns around a free-to-access 'open gates' approach. These concerns are around reduction of facility quality due to improper use and antisocial behaviours and potential liabilities incurred. Providing better organised access for informal recreational/casual youth activity could help address these issues.

7.4 Quality

Of the 15 full size pitches in East Dunbartonshire, seven are assessed as good and eight are assessed as standard quality. The good quality assessed pitches are Boclair Academy, Kirkintilloch Community Sports Complex, High Park, West of Scotland Football Club, Turnbull High School and Huntershill Sports Hub (two pitches). No sites are assessed as poor quality.

Although no pitch has received a poor-quality rating, it is worth noting that the carpets on certain pitches are over 10 years old and may need to be replaced in the relatively near future. These are mainly school/EDC pitches.

Table 7.7: Summary of full sized STP quality

ID	Site	Floodlights	Year build	Recent investment	Quality
3	Bearsden Academy	Yes	2009	2020	Standard
4	Bishopbriggs Academy	Yes	2009	2020	Standard
5	Boclair Academy	Yes	2012	2022	Good
10	Douglas Academy	Yes	2009	2019	Standard
12	High Park	Yes	2024	-	Good
14	Huntershill Sports Hub	Yes	2016	-	Good
14	Huntershill Sports Hub	Yes	2016	-	Good
16	Kirkintilloch High School	Yes	2009	2021	Standard
21	Lenzie Academy	No	2012	-	Standard
25	Merkland Outdoor Recreation Centre	Yes	2003	2017	Standard
31	St Helens Primary School	No	2008	-	Standard
33	St Ninians High School	Yes	2009	2019	Standard
41	Turnbull High School	Yes	2009	2022	Good
43	West of Scotland Football Club	Yes	-	-	Good
52	Kirkintilloch Community Sports Complex	Yes	2024	-	Good

7.5 Supply and demand analysis

In general, East Dunbartonshire is well served for STPs for both football and rugby with facilities in all key population areas.

There continues to be strong demand for 3G pitches across the Authority with spare capacity being limited. However, no major concerns regarding supply of 3G pitches were expressed at the consultation sessions, apart from the issue raised by Milngavie FC in respect of provision in Milngavie. Small-sided pitches and school sports halls also support training demand, particularly for younger age groups. There is demand for Lenzie Academy 3G pitch to have floodlights installed, which would provide increased supply for both Lenzie football and rugby clubs.

Whilst clubs are generally happy with the overall supply of provision, the major concern is accessing pitches on a Sunday, to accommodate certain age ranges. Addressing this would help accommodate development of women's and girls' formats, which have witnessed a significant increase in participation recently.

STP summary

- There are 15 full size 3G of which 13 are floodlit. Seven are assessed as good. All are community accessible.
- There is a need to review quality of carpets at certain pitches as they are over 10 years old.
- Provision in Milngavie needs to be considered taking account of current and future club growth
- There is demand for floodlights at Lenzie Academy's full sized 3G pitch, to support both the local football and rugby clubs.
- Availability of provision in the peak period is generally good. Provision on education is generally made available after school and at weekends. However, spare capacity is limited.
- Sports halls and small-sided provision also offer additional supply for clubs.
- All pitches are assessed as standard quality, except for Huntershill and West of Scotland Rugby Club which are good.
- The key issue is exploring options to open school STPs on a Sunday to support match play, particularly in the west of the Authority.
- There is a need for an improved recreational football offer in certain areas – delivering this is considered likely to help address the issue of young people accessing sites illegally.

High Park Pavilion



PART 8: DRAFT GENERAL RECOMMENDATIONS

(timescales: **S** – short (1-2 years), **M** – medium (2-3 years) and **L** - long (3-5 years)

Strategic data & overview				
Issue	Recommended actions	Responsible	Outcomes	Timescales
Implementation of the Strategy.	Steering Group to become a working 'Strategy Implementation and Review Group' (SIR) to address issue of inter-agency strategic co-ordination	EDC, EDLC, sportscotland SGBs as relevant	Improved planning and delivery of pitch provision and management. Improved user experience. More flexible & efficient use of ED Pitches	On-going for 5-year duration of Strategy (with periodic reviews).
Accompanying the Sports Pitch Strategy is a database containing information on outdoor sports pitch facilities sites and users. It is essential that this is kept up to date to enable EDC and EDLC to strategically plan in the medium/long term and respond appropriately to enquiries, funding opportunities etc	EDC and EDLC identify and allocate resources to the maintenance of database records and identify the process and timing required to carry this out	EDC/EDLC	At any given time, the playing pitch database provides a reliably accurate picture of supply of and demand for outdoor sports facilities in East Dunbartonshire	2025 first year review and reviewed annually thereafter

Increasing supply				
Issue	Recommended actions	Responsible	Outcomes	Timescales
There is insufficient full-sized 3G provision in the west, particularly in Milngavie.	Undertake a supply/demand analysis in the west of the Authority to assess the extent of need for additional 3G provision. This will include reviewing current booking sheets and pitch operating times.	EDC/EDLC	To identify whether any additional provision is required in the west or whether operating hours for current pitches be expanded to cater for additional demand.	S

Management of pitches					
Issue	Recommended actions	Responsible	Outcomes	Timescales	
Age of playing surfaces at certain 3G pitches	Monitor school sites where the carpet is over 10 years old to identify when they should be replaced.	EDC	New playing surfaces at certain school sites.		
Different management regimes in operation across pitch providers	Single/unified management regime in East Dunbartonshire for pitch programming	EDC/EDLC	One stop service for pitch user groups - greater clarity regarding pitch supply and demand patterns	S	
Charging regimes can appear inconsistent, creating unclear pricing picture for users.	Closer harmonisation of prices across providers	EDC/EDLC/ SPIE	Parity of pricing for like-for-like bookings. Improved clarity for users.	S	
Restricted access to/cost of schools based STPs. Includes lack of access to school sites on Sundays. As the game has grown, particularly the women's game, there is additional demand for access to pitches on Sundays. With only the EDLC pitches available on that day, certain clubs are unable to fulfil matches, restricting ability to expand certain sections of their club.	Harmonisation of prices across providers Review current contract between EDC and the schools to identify options to allow access to school sites on a Sunday.	EDC/EDLC/ SPIE	Parity of charging for clubs for STPs Improved clarity for users Reduction in overplay	S	
EDC and EDLC have different serial let policies and practice (EDC annual & EDLC every 6 months), creating lack of clarity for users	Agree common policy and practice as part of unified management regime	EDC/EDLC	Parity of arrangement to provide clarity for Clubs	S	
Pitch inspection timings/call off procedures for grass pitches causes scramble for pitches close to match day.	Closer co-ordination and improved procedures to resolve the issue for the long term	EDC/EDLC	Clubs experience seamless service to secure them a match pitch.	S	

Management of pitches				
Issue	Recommended actions	Responsible	Outcomes	Timescales
Lack of a recreational offer in certain areas.	<p>Work with youth services/schools/charities to explore where/how 3G pitches can be used for formal drop-in recreational activities.</p> <p>It must be noted that there needs to be a balance between casual and organised club sessions, to ensure all parties have equal access. In addition, any recreational sessions must be supervised to reduce any concerns regarding facility quality and improper use.</p>	EDC/EDLC	Increase organised youth activities in areas where there is strong demand/high levels of ASB/improper access.	S

Pitches upgrading & maintenance				
Issue	Recommended actions	Responsible	Outcomes	Timescales
Sites identified as requiring investment to upgrade their rating from poor to standard as minimum, need to be targeted for support via capital programme and external funding sources	Develop prioritisation process for informing the EDC Capital Programme process and external funding sources	EDC/EDLC	Planned programme of pitch improvements within capital programme	S-M

Supporting Development				
Issue	Recommended actions	Responsible	Outcomes	Timescales
Larger scale clubs seeking to consolidate activity on single or small number of sites	Work with Football Forum and Rugby Development Group to identify hub sites or single club venues	Sports specific development groups and the SIR Group.	Clubs based at 'home' venues enabling them to concentrate on developing their sport rather than sourcing venues	S-M

APPENDIX B: LIST OF CLUBS CONSULTED AND RESPONDED

- Baljaffray FC
- Campsie FC
- East Dunbartonshire FC
- Glasgow Harp
- Harestanes AFC
- Kirkintilloch Rob Roy
- Lenzie Rugby club
- Lenzie Youth Club
- Milngavie FC
- Phoenix FC
- Rosebank United
- Rossvale Community FC
- Torrance
- West Park United
- Westerton

APPENDIX C: NON TECHNICAL ASSESSMENT SHEETS

Grass football pitch non-technical assessment

Non Technical Visual Quality Assessment - Football									
Please complete one form per pitch									
Site reference:		Site Name:							
6 figure grid reference		Pitch ID(s):							
Number of football pitches on site:		Pitch size:							(Adult 11v11, Youth 11v11, 9v9, 7v7 Mini, 5v5, 7v7)
Availability		Are any other pitches marked out over this pitch? <i>If yes, please indicate what pitches are overmarked? (i.e. one youth pitch is overmarked on a adult pitch) in Pitch Issues</i>							
Weather at time of visit & date of visit									
Pitch Issues:									
Assessment Criteria (please rank each of the following aspects for each pitch with an 'X' in the coloured box to the right of the chosen answer)									
Element (Gathered via a non technical site assessment)	Rating			Guidance notes			Comments		
Playing surface									
Grass Cover	Good >80%		Adequate 60-80%		Poor <60%		Advice is to walk through the middle of the pitch		
Does the pitch meet The FA minimum size?	Yes - as per the FA recommended size		Within FA recommended guidelines		No		See size chart below for recommended dimensions		
Slope of pitch (gradient and cross fall)	Flat		Moderate		Severe				
Length of grass	Good		Too long		Too short		Good 30mm-50mm, Too long 51mm plus, Too short 25mm less		
Evenness of pitch	Good		Adequate		Poor				
Problem Areas: Evidence of dog fouling/glass/litter/vehicle tracks	None		Yes - some		Yes - lots				
Problem Areas: Evidence of unofficial use/damage to the surface	None		Yes - some		Yes - lots				
Problem Areas: Evidence of poor drainage	No evidence of standing water or poor drainage		Some evidence of poor drainage		Yes, poor drainage				
Maintenance programme (information from maintenance schedule/grounds team/club survey)									
Grass cutting	Yes, as required		Yes, but not frequent enough		No				
Seeded	Yes, as required		Not known		No				
Aerated (per year)	Three or more times		Once/ twice		No				
Sand dressed	Within the last 12 months		Within the last 2 years		No				
Fertilised	Within the last 12 months		Within the last 2 years		No				
Weed killed	Within the last 12 months		Within the last 2 years		No				
Section total									
NB If none of this information is provided you should assume that only the grass is being cut and the rest of the maintenance items should be marked with the lowest score option.									
PITCH SCORE			0.0%			RATING			Poor

Grass rugby pitch non-technical assessment

Non Technical Visual Quality Assessment - Rugby Union

Please complete one form per pitch

Site reference		Site Name			
6 figure grid reference		Pitch ID(s)			
Date of assessment		Pitch size		(Senior, Mini/Midi)	
Number of pitches on site		Are any other pitches marked out over this pitch?			
Availability		If yes, please indicate what pitches are overmarked? (i.e. one mini/midi pitch is overmarked on a senior pitch) in Pitch Issues			
Community Use - used, Community Use - unused, No Community Use, Available but Unused					
Weather at time of visit					
General comments/observations					
Assessment Criteria (please rank each of the following aspects for each pitch with an 'X' in the coloured box to the right of the chosen answer)					
Qualitative information (gathered on site)		Rating		Guidance notes	
Grass Coverage	Good	Adequate	Poor	>90% = good. <80% = poor	
Size of pitch	Acceptable (between recommended minimum and maximum sizes)	Flag for further investigation (below recommended minimum size)	Unacceptable (above maximum size)	Maximum size = width 70m, goal line to goal line 100m, in goal area 22m, run offs 5m where practical. Recommended minimum size = width 68m, goal line to goal line 94m, in goal area 6m, run offs 5m where practical.	
Length of grass	Too Long	Good	Too short	Too long = >75mm, Too short = <50mm	
GOALPOSTS					
Problem Areas: Evidence of glass/filter/vehicle tracks/dog fouling					
Are goalposts installed?	Yes	Yes - some	Yes lots		
Is there any obvious danger on posts?	Yes	No			
Are the posts stable in the ground?	Yes	No			
Is the crossbar fixed securely?	Yes	No			
Is there evidence of rust on the posts?	Yes	No			
ANCILLARY					
Is the pitch floodlit?	Yes	No			
Is there changing accommodation for the pitch?	Yes	No			
Is an appropriate level of car parking available?	Yes	No			
Pitch maintenance (information gathered via club survey pitch provider consultation) - refer to the guidance notes below					
Aerated (per year)	three or more times	twice	once	never	
Sand dressed (per year)	three or more times	twice	once	never	
Fertilised (per year)	three or more times	twice	once	never	
Weed killed (per year)	three or more times	twice	once	never	
Chain harrowed	every week	fortnightly	monthly	never	
Drainage					
Natural (adequate) SCORE D0	Natural (adequate) SCORE D1	Pipe drained SCORE D2	Pipe and silt drained SCORE D3	Unknown SCORE D0	Natural (adequate) = 3 or less training/match cancellations per season Natural (adequate) = 4 or more training match cancellations per season *Based on a pipe drained system at 5m centres that has been installed in the previous eight years **Based on a silt drained system at 1m centres completed in the previous five years.

Artificial grass pitches non-technical assessment (including third generation turf pitches)

Non Technical Visual Quality Assessment - Artificial grass pitches									
Site reference			Site Name						
6 figure grid reference			Pitch ID						
Number of AGPs on site			Pitch size		Full (i.e., 100m x 60m)			Half (i.e., 60m x 40m)	
Availability									
Community Use - used, Community Use - unused, No Community Use, Available but Unused									
Type of pitch	Long Pile 3G (65mm with shock pad)		Medium Pile 3G (55-60mm)		Short Pile 3G (40mm)				
	Sand Dressed		Sand Filled		Water based				
Assessment Criteria (please rank each of the following aspects for each pitch with an 'X' in the coloured box to the right of the chosen answer)									
Element	Rating					Guidance notes			Site comments
	less than 2 years	2-5 years	5-10 years	over 10 years					
Age of Surface	less than 2 years	2-5 years	5-10 years	over 10 years					
Evidence of moss/lichen (all surfaces)	None	Yes - some	Yes - some	Yes - lots					
Loose gravel (macadam surface)	None	Yes - some	Yes - some	Yes - lots					
Holes or rips in surface (macadam, art. grass or polymeric surfaces)	None	Yes - some	Yes - some	Yes - lots					
Grip underfoot	Good	Adequate	Adequate	Poor					
Line markings - quality	Good	Adequate	Adequate	Poor					
Problem Areas: Evidence of Glass/ stones/ litter	None	Yes - some	Yes - some	Yes - lots					
Problem Areas: Evidence of inappropriate use	None	Yes - some	Yes - some	Yes - lots					
Problem Areas: Evidence of damage to surface	None	Yes - some	Yes - some	Yes - lots					If no evidence, assume none.
Access for disabled players, i.e.: ramps onto courts, width of gates	Good	Adequate	Adequate	Poor					
Condition of posts/ nets/ goals	Good	Adequate	Adequate	Poor					
Surrounding fencing	Good	Adequate	Adequate	Poor					
Adequate safety margins (where appropriate)	Yes - fully	No-but adequate	No-but adequate	No - not adequate					
Is the AGP floodlit?	Yes		No	No					
Is the AGP left open at all times?	Yes		No	No					
Are there dug outs?	Yes		No	No					

Other formats

This document can be provided in large print, Braille or in audio format and can be translated into other community languages.

Please contact the Council on 0300 123 4510

本文件可按要求翻譯成中文，如有此需要，請電 0300 123 4510

اس دستاویز کا ترجمہ کرنے پر (اردو) زبان میں ترجمہ کیا جاسکتا ہے۔ براہ مہربانی فون نمبر 0300 123 4510 پر رابطہ کریں۔

ਇਸ ਦਸਤਾਵੇਜ਼ ਦਾ ਅੰਗ ਕਰਨ ਤੇ ਪੰਜਾਬੀ ਵਿਚ ਅਨੁਵਾਦ ਕੀਤਾ ਜਾ ਸਕਦਾ ਹੈ। ਕਿਰਪਾ ਕਰਕੇ 0300 123 4510 ਫੋਨ ਕਰੋ।

Gabhaidh an sgrìobhainn seo cur gu Gàidhlig ma tha sin a dhìth oirbh. Cuinibh fòin gu 0300 123 4510

अनुवाच कलसे पर यह दस्तावेज हिन्दी में भाषांतरित किया जा सकता है। कृपया 0300 123 4510 पर फोन कीजिए।