

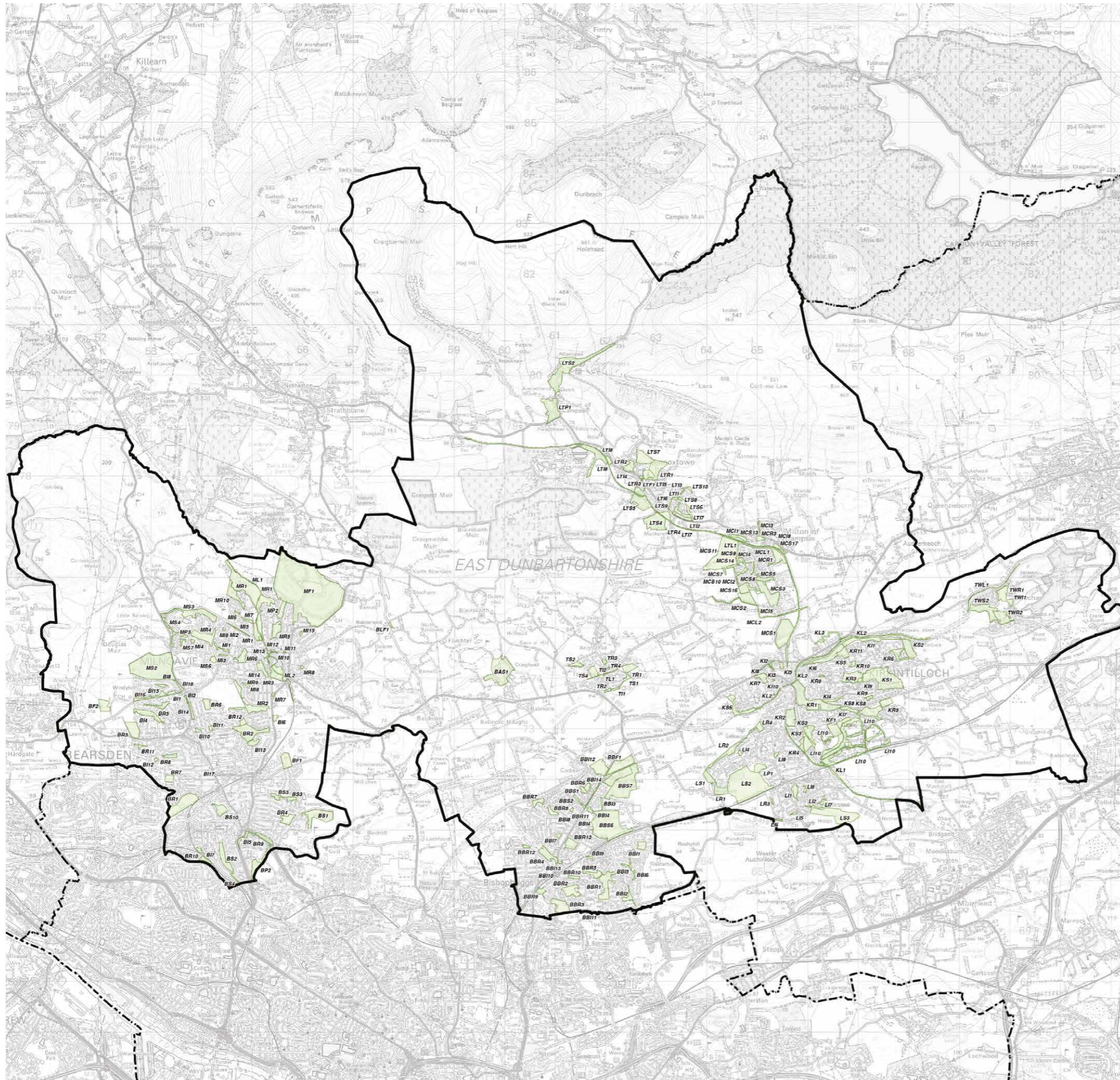
## Open Space Strategy

January 2014

7929 GIS 101

### Legend

-  East Dunbartonshire Local Authority Boundary
-  Scottish Local Authority Boundaries
-  Open Space Audit Sites



**Figure 1**

Open Space Audit Sites



This map is reproduced from Ordnance Survey material with the permission of Ordnance Survey on behalf of the Controller of Her Majesty's Stationary Office © Crown Copyright 2013. Unauthorised reproduction infringes Crown copyright and may lead to prosecution or civil proceedings. AL100017966



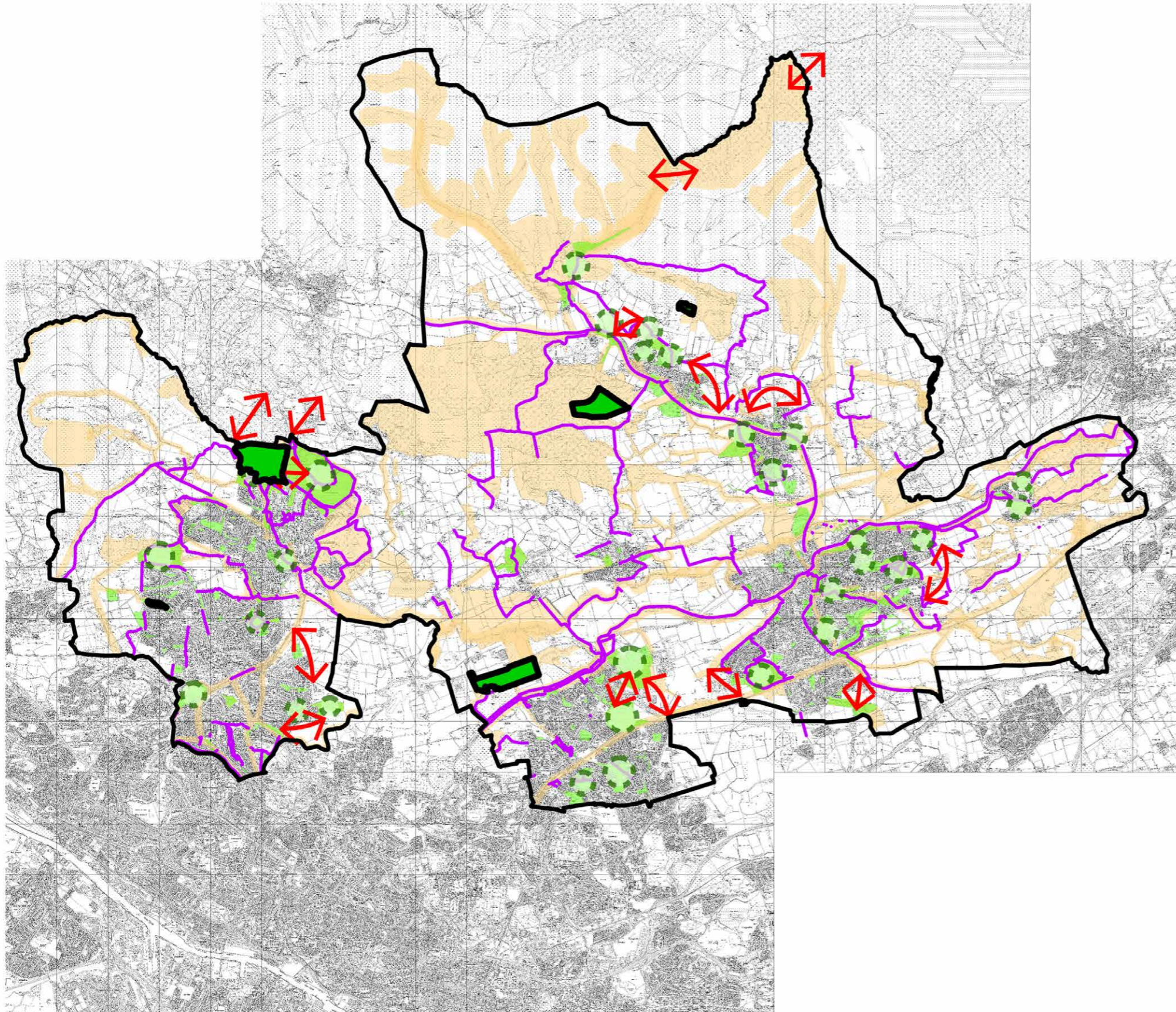
## Open Space Strategy

January 2015

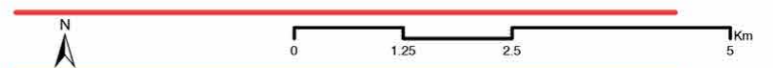
7929 GIS 102

### Legend

-  East Dunbartonshire Local Authority Boundary
-  SSSI
-  Green network Stepping Stones
-  Green Network Hub
-  Core Paths
-  Open Space Audit Sites
-  Local Nature Conservation Sites



**Figure 2**  
 East Dunbartonshire's  
 Green Network



This map is reproduced from Ordnance Survey material with the permission of Ordnance Survey on behalf of the Controller of Her Majesty's Stationary Office © Crown Copyright 2013. Unauthorised reproduction infringes Crown copyright and may lead to prosecution or civil proceedings. AL100017966



## Open Space Strategy

January 2014

7929 GIS 103

### Legend

- Regionally Important Geological Site
- Recreational Walkway / Cycleway
- Regional Historic / Natural Attraction
- Regional Site of Nature Conservation Interest
- Regional Sport and Outdoor Recreation Site
- Regional Greenspace 2km buffer



**Figure 3**

**Regional Open Space**



This map is reproduced from Ordnance Survey material with the permission of Ordnance Survey on behalf of the Controller of Her Majesty's Stationary Office © Crown Copyright 2013. Unauthorised reproduction infringes Crown copyright and may lead to prosecution or civil proceedings. AL100017966



## Open Space Strategy

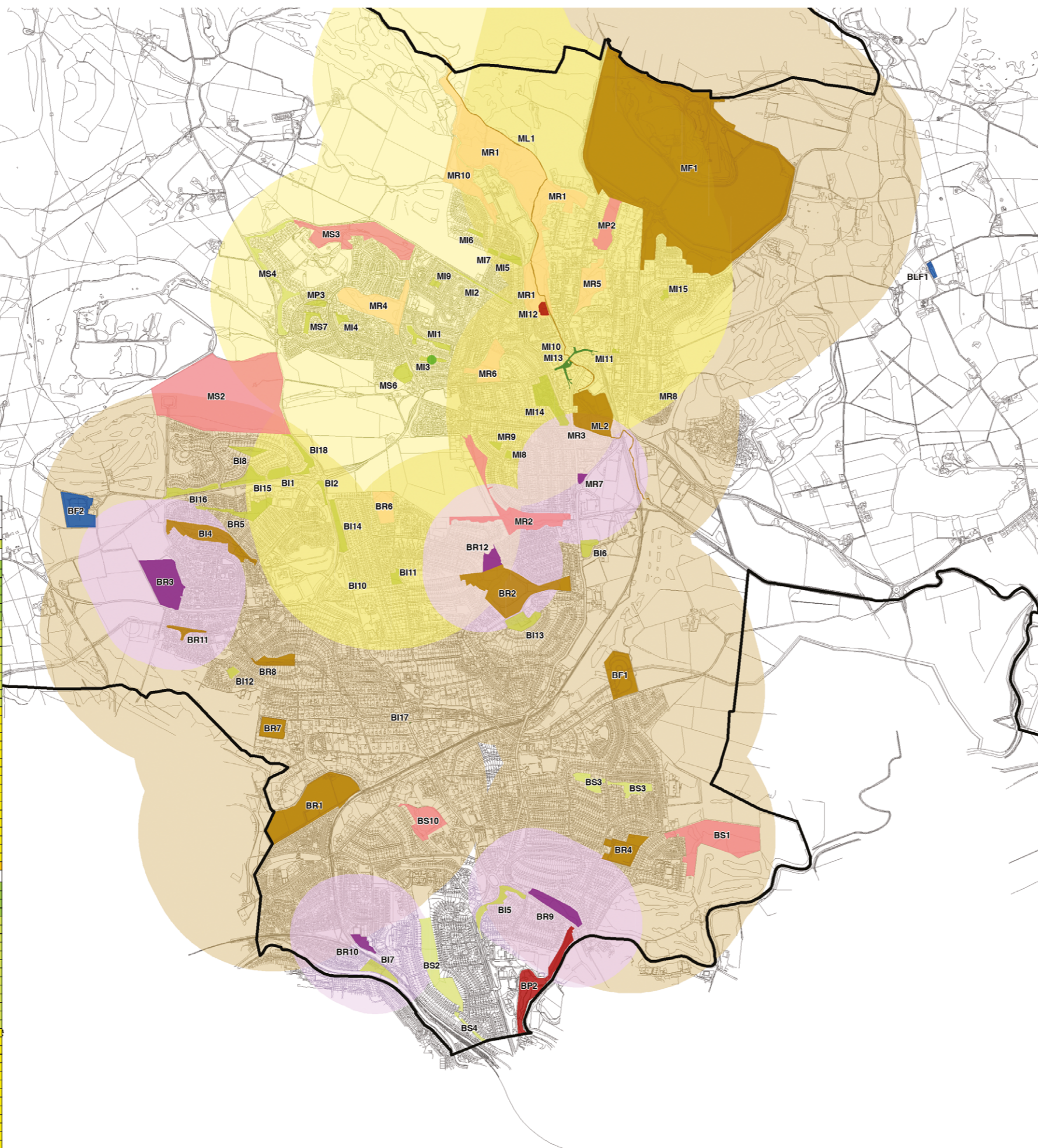
January 2014

7929 GIS 104

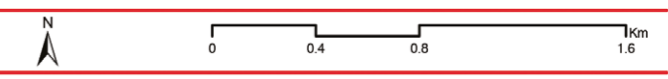
### Legend

-  East Dunbartonshire Local Authority Boundary
-  Scottish Local Authority Boundaries
-  Allotments
- Neighbourhood Open Spaces**
  -  Local Nature Conservation Site
  -  Natural / Semi-natural Greenspace
  -  Neighbourhood Park
  -  Sports Areas
- Local Open Spaces**
  -  Amenity Greenspace
  -  Cemetery
  -  Civic Space
  -  Local Park
  -  Private Gardens / Grounds
- Regional Open Space**
  -  Recreational Walkway / Cycleway;  
Regional Historic / Natural Attraction;  
Regional Site of Nature Conservation Interest;  
Regional Sport and Outdoor Recreation Site
- Distance Bands**
  -  Local Parks 400m buffer
  -  Neighbourhood Parks 840m buffer
  -  Regional Open Space 840m buffer

Site Ref.	Site Name	Quality Score
<b>Baldernock</b>		
BLF1	Baldernock Cemetery	69
<b>Bearsden</b>		
BR2	Kilmadinn Loch Local Nature Reserve	85
BR12	Moshead Park	81
BR2	Glasgow Uki Woods	79
BR3	Langfauld's Field	78
BR7	Bearsden War Memorial	76
BR4	King George V Park	75
BS2	Cairnhill Woods	75
BR1	Colquhoun Park	74
B4	Grampian Way and Cruchan Road O.S.	73
BR7	Thorn Park	70
BR6	Heather Ave Open Space	68
BF1	New Kipatrick Cemetery	67
BR15	Patterson Place O.S.	66
BS1	Tennishill Woods	65
BR11	Antonie Park	65
BR16	Stockie Muir Road OS 2	65
BS	Braemar Cres. O.S.	65
BR8	Flonan Park	64
BS3	Cairnhill Woods	64
BR2	Langfauld's Cemetery	63
BR2	Stockie Muir Road 1	63
BR6	Abercrombie Dr. O.S.	62
BS10	St Germain's Loch	61
BR11	Argyle Road O.S.	60
BR1	Cromall Crescent OS	60
BS4	Cairnhill Woods South	60
BR13	Kilmadinn House	59
BR10	Bain's Dr. (south) O.S.	59
BR12	Southview O.S.	58
BR10	Westerton Park	58
BR14	Balgie Drive O.S.	55
BR5	Baljaffray O.S.	55
BR7	Westerton Station O.S.	55
BR8	Moorfoot Way O.S.	54
BR9	Cluny Park	50
BR6	Alander Sports Centre O.S.	44
<b>Milngavie</b>		
MR3	Milngavie Precinct	82
MP1	Maggick Reservoirs	79
MP2	Tannoch Loch	76
MR3	Lennox Park	75
ML1	West Highland, Milngavie	74
MS3	Craigton Wood	74
MR10	Milngavie War Memorial	73
MS4	Craigton Rd Woodland	72
MR11	Lille Art Gallery O.S.	70
MP3	Douglas Muir Rd O.S.	70
MR1	Alander Park	69
ML2	Alander Way, Milngavie	69
MS2	Meins Plantation	67
MR5	North Dumbgoyne Ave. O.S.	65
MR7	James Watt O.S.	65
MR12	Milngavie Library O.S.	65
MR2	Craigton Road O.S.	65
MR6	Craigton	64
MR7	Drumbug Terr. Wood	64
MR9	Keystone Quadrant	63
MR6	Oakburn Park	63
MR12	Craigdu Wedge	62
MR7	Antonie Gardens	62
MR15	Campsie Drive	62
MR4	Mains Park	61
MR10	Alander Park	61
MR6	Crawford Road O.S.	61
MR8	Breadie Drive O.S.	60
MR8	Douglas Ave Open Space	58
MR4	Craigbarnet Rd O.S.	58
MR5	Barloch Moor	58
MR1	Craigleith Crescent O.S.	58
MR4	Lennox Avenue / Park Road	54
MR9	Lyle Sq. O.S.	54
MR3	Aethum Gardens O.S.	50



**Figure 4a**  
 Neighbourhood and Local Open Spaces  
 (Bearsden and Milngavie)



This map is reproduced from Ordnance Survey material with the permission of Ordnance Survey on behalf of the Controller of Her Majesty's Stationary Office © Crown Copyright 2013. Unauthorised reproduction infringes Crown copyright and may lead to prosecution or civil proceedings. AL100017966



## Open Space Strategy

January 2014

7929 GIS 105

### Legend

- East Dunbartonshire Local Authority Boundary
- Scottish Local Authority Boundaries
- Allotments

### Neighbourhood Open Spaces

- Local Nature Conservation Site
- Natural / Semi-natural Greenspace
- Neighbourhood Park
- Sports Areas

### Local Open Spaces

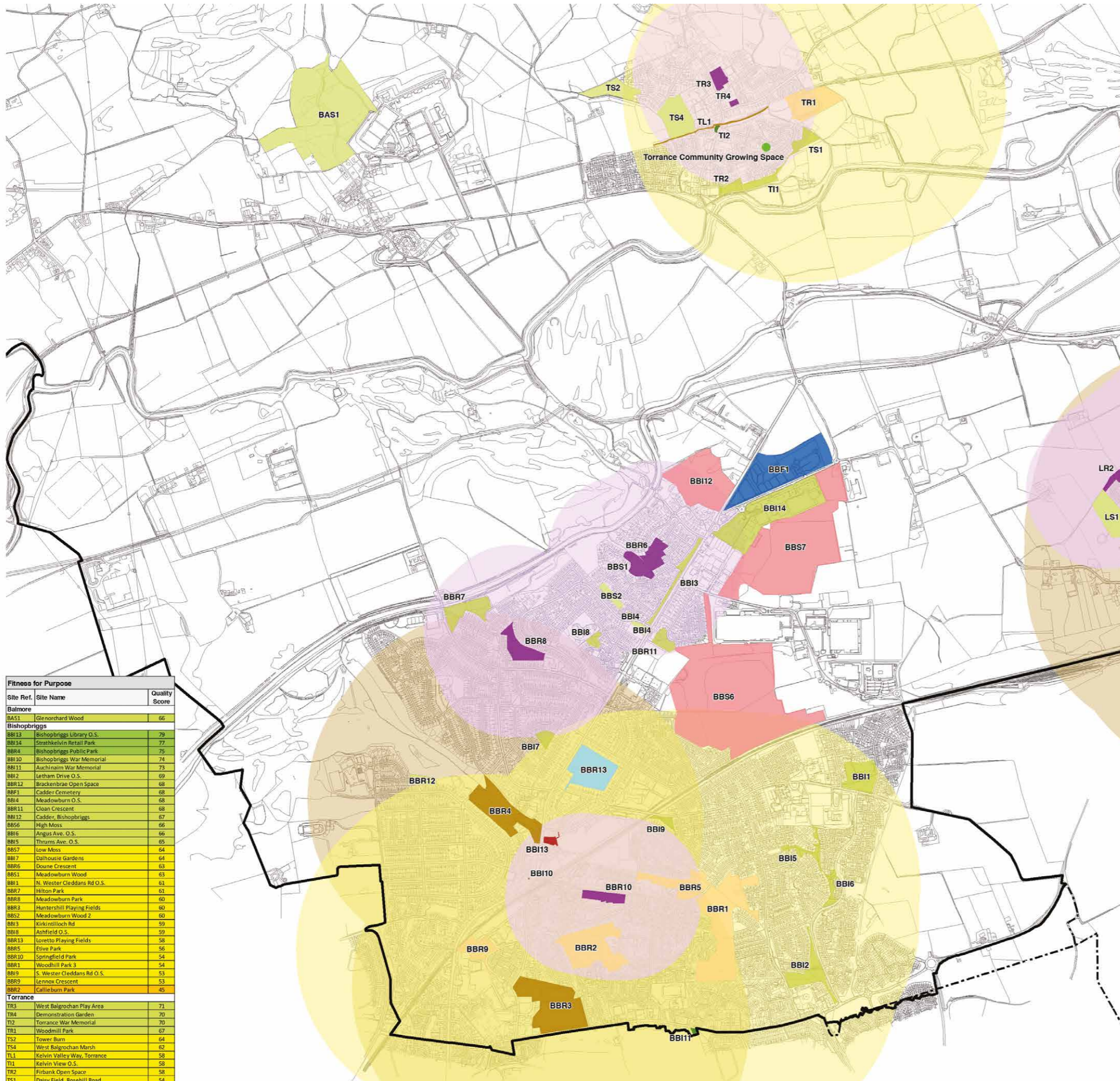
- Amenity Greenspace
- Cemetery
- Civic Space
- Local Park
- Private Gardens / Grounds

### Regional Open Space

- Recreational Walkway / Cycleway;
- Regional Historic / Natural Attraction;
- Regional Site of Nature Conservation Interest;
- Regional Sport and Outdoor Recreation Site

### Distance Bands

- Local Parks 400m buffer
- Neighbourhood Parks 840m buffer
- Regional Open Space 840m buffer

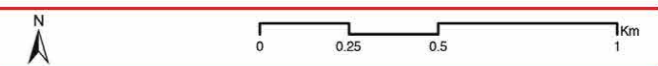


Fitness for Purpose		
Site Ref.	Site Name	Quality Score
<b>Balmore</b>		
BAS1	Glenorchard Wood	66
<b>Bishopbriggs</b>		
BB13	Bishopbriggs Library O.S.	79
BB14	Strathkelvin Retail Park	77
BBR4	Bishopbriggs Public Park	75
BB10	Bishopbriggs War Memorial	74
BB11	Auchinairn War Memorial	73
BB12	Letham Drive O.S.	69
BBR12	Brackenbrae Open Space	68
BBF1	Cadder Cemetery	68
BBR4	Meadowburn O.S.	68
BBR11	Cloan Crescent	68
BB12	Cadder, Bishopbriggs	67
BB56	High Moss	66
BB16	Angus Ave. O.S.	66
BB15	Thorns Ave. O.S.	65
BB57	Low Moss	64
BB17	Dalhousie Gardens	64
BBR6	Downe Crescent	63
BB51	Meadowburn Wood	63
BB11	N. Wester Cleddans Rd O.S.	61
BBR7	Hilton Park	61
BBR8	Meadowburn Park	60
BBR3	Huntershill Playing Fields	60
BB52	Meadowburn Wood 2	60
BB13	Kirkintilloch Rd	59
BB18	Ashfield O.S.	59
BBR13	Loretto Playing Fields	58
BBR5	Elvie Park	56
BBR10	Springfield Park	54
BBR1	Woodhill Park 3	54
BB19	S. Wester Cleddans Rd O.S.	53
BBR9	Lennox Crescent	53
BBR2	Callieburn Park	45
<b>Torrance</b>		
TR3	West Balgrogan Play Area	71
TR4	Demonstration Garden	70
T12	Torrance War Memorial	70
TR1	Woodmill Park	67
TS2	Tower Burn	64
TS4	West Balgrogan Marsh	62
TL1	Kelvin Valley Way, Torrance	58
T11	Kelvin View O.S.	58
TR2	Firbank Open Space	58
TS1	Daisy Field, Rosehill Road	54

**Figure 4b**

### Neighbourhood and Local Open Spaces

(Bishopbriggs, Torrance and Balmore)



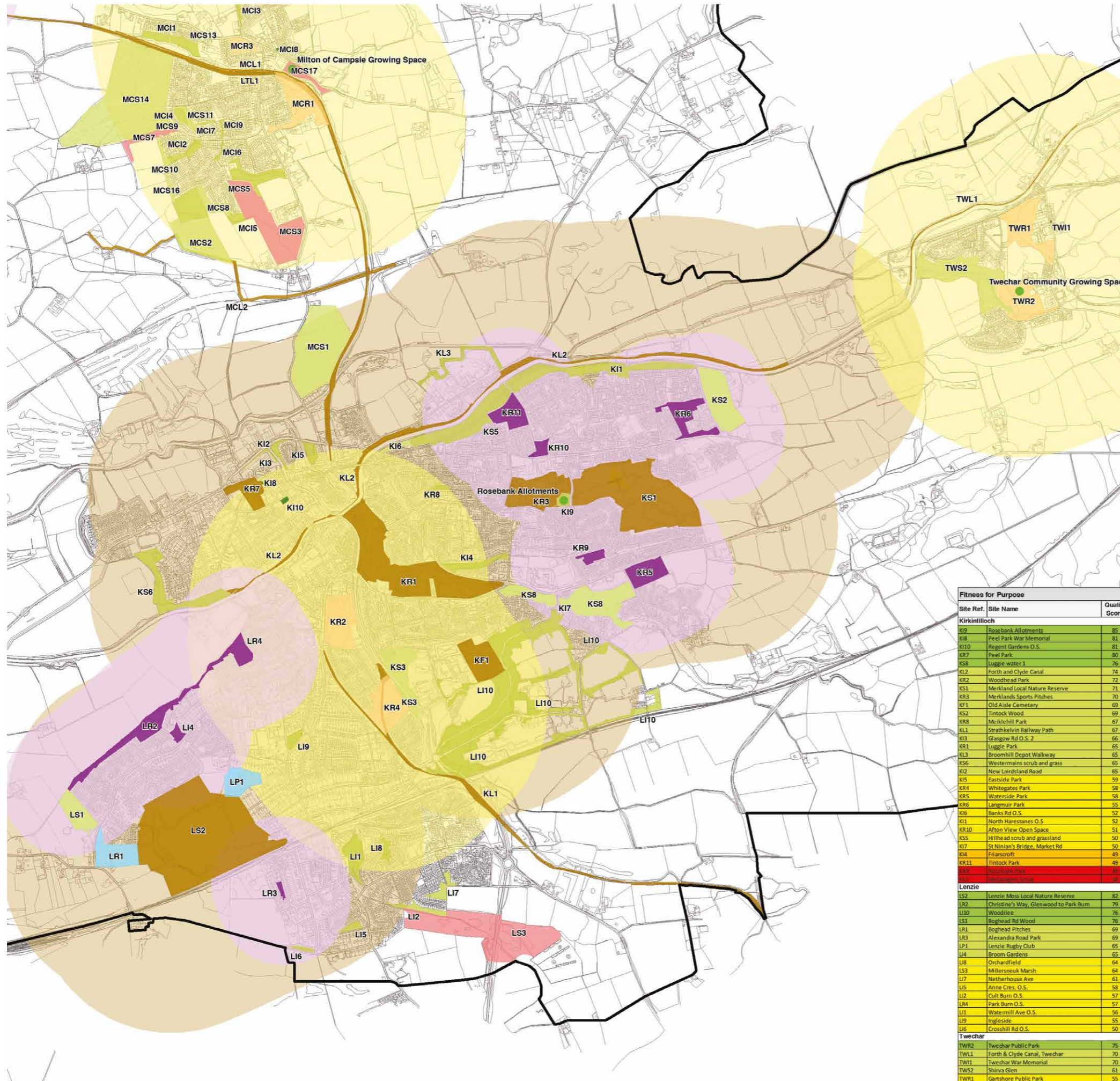
This map is reproduced from Ordnance Survey material with the permission of Ordnance Survey on behalf of the Controller of Her Majesty's Stationary Office © Crown Copyright 2013. Unauthorised reproduction infringes Crown copyright and may lead to prosecution or civil proceedings. AL100017966



## Open Space Strategy

January 2014

7929 GIS 106



### Legend

- East Dunbartonshire Local Authority Boundary
- Scottish Local Authority Boundaries
- Allotments

### Neighbourhood Open Spaces

- Local Nature Conservation Site
- Natural / Semi-natural Greenspace
- Neighbourhood Park
- Sports Areas

### Local Open Spaces

- Amenity Greenspace
- Cemetery
- Civic Space
- Local Park
- Private Gardens / Grounds

### Regional Open Space

- Recreational Walkway / Cycleway;
- Regional Historic / Natural Attraction;
- Regional Site of Nature Conservation Interest;
- Regional Sport and Outdoor Recreation Site

### Distance Bands

- Local Parks 400m buffer
- Neighbourhood Parks 840m buffer
- Regional Open Space 840m buffer

Site Ref.	Site Name	Quality Score
<b>Kirkintilloch</b>		
K09	Rosebank Allotments	85
K18	Peel Park War Memorial	81
K10	Regent Gardens O.S.	81
KR7	Peel Park	80
KS8	Luggie Walkway 1	76
K13	Forth and Clyde Canal	74
KR2	Woodhead Park	72
KS1	Merikland Local Nature Reserve	71
KR3	Merikland Sports Pitches	70
KF1	Old Aisle Cemetery	69
KS2	Tintock Wood	69
KR8	Meiklehill Park	67
KL1	Strathkelvin Railway Path	67
K13	Glasgow Rd O.S. 2	66
KR1	Luggie Park	65
KL3	Broomhill Depot Walkway	65
KS6	Westerns scrub and grass	65
K12	New Lairdland Road	65
K15	Exeaside Park	59
KR4	Whitgates Park	58
KR5	Waterside Park	58
KR6	Langmuir Park	55
K16	Banks Rd O.S.	52
K11	North Harestanes O.S.	52
KR10	Afton View Open Space	51
KS5	Hillhead scrub and grassland	50
K17	St Ninian's Bridge, Market Rd	50
K14	Franscroft	49
KR11	Tintock Park	49
KR9	Highgate Wood	48
K19	Highgate Wood	48
<b>Lenzie</b>		
LS2	Lenzie Moss Local Nature Reserve	82
LR2	Christine's Way, Glenwood to Park Burn	79
LI10	Woodilee	76
LS1	Boghead Rd Wood	76
LR1	Boghead Pitches	69
LR3	Alexandra Road Park	69
LP1	Lenzie Rugby Club	65
LI4	Broom Gardens	65
LI8	Orchardfield	64
LS3	Milnerneuk Marsh	64
LI7	Netherhouse Ave	61
LI5	Anne Cres. O.S.	58
LI2	Cult Burn O.S.	57
LI4	Park Burn O.S.	57
LI1	Watermill Ave O.S.	56
LI9	Inglestone	55
LI6	Crosshill Rd O.S.	50
<b>Twechar</b>		
TWR2	Twechar Public Park	75
TWL1	Forth & Clyde Canal, Twechar	70
TW1	Twechar War Memorial	70
TWS2	Shirva Glen	61
TWR1	Gartshore Public Park	55

**Figure 4c**

Neighbourhood and Local Open Spaces

(Kirkintilloch, Lenzie and Twechar)



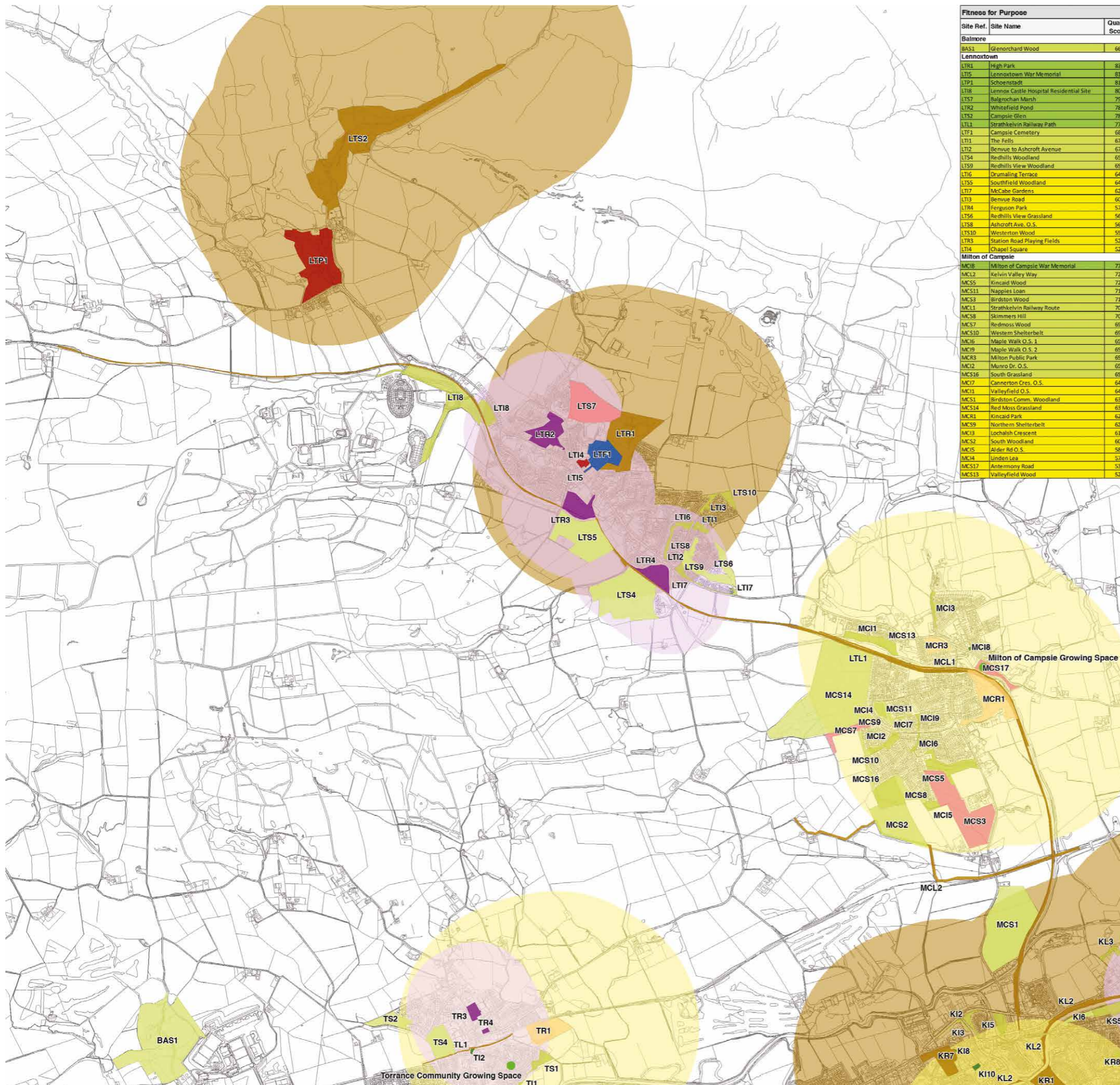
This map is reproduced from Ordnance Survey material with the permission of Ordnance Survey on behalf of the Controller of Her Majesty's Stationary Office © Crown Copyright 2013. Unauthorised reproduction infringes Crown copyright and may lead to prosecution or civil proceedings. AL100017966



## Open Space Strategy

January 2014

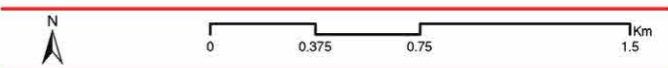
7929 GIS 107



### Legend

- East Dunbartonshire Local Authority Boundary
- Scottish Local Authority Boundaries
- Allotments
- Neighbourhood Open Spaces**
  - Local Nature Conservation Site
  - Natural / Semi-natural Greenspace
  - Neighbourhood Park
  - Sports Areas
- Local Open Spaces**
  - Amenity Greenspace
  - Cemetery
  - Civic Space
  - Local Park
  - Private Gardens / Grounds
- Regional Open Space**
  - Recreational Walkway / Cycleway;
  - Regional Historic / Natural Attraction;
  - Regional Site of Nature Conservation Interest;
  - Regional Sport and Outdoor Recreation Site
- Distance Bands**
  - Local Parks 400m buffer
  - Neighbourhood Parks 840m buffer
  - Regional Open Space 840m buffer

**Figure 4d**  
 Neighbourhood and Local Open Spaces  
 (Lennoxtown, Milton of Campsie, Clachan of Campsie and Haughead)



This map is reproduced from Ordnance Survey material with the permission of Ordnance Survey on behalf of the Controller of Her Majesty's Stationary Office © Crown Copyright 2013. Unauthorised reproduction infringes Crown copyright and may lead to prosecution or civil proceedings. AL100017966















## Open Space Strategy

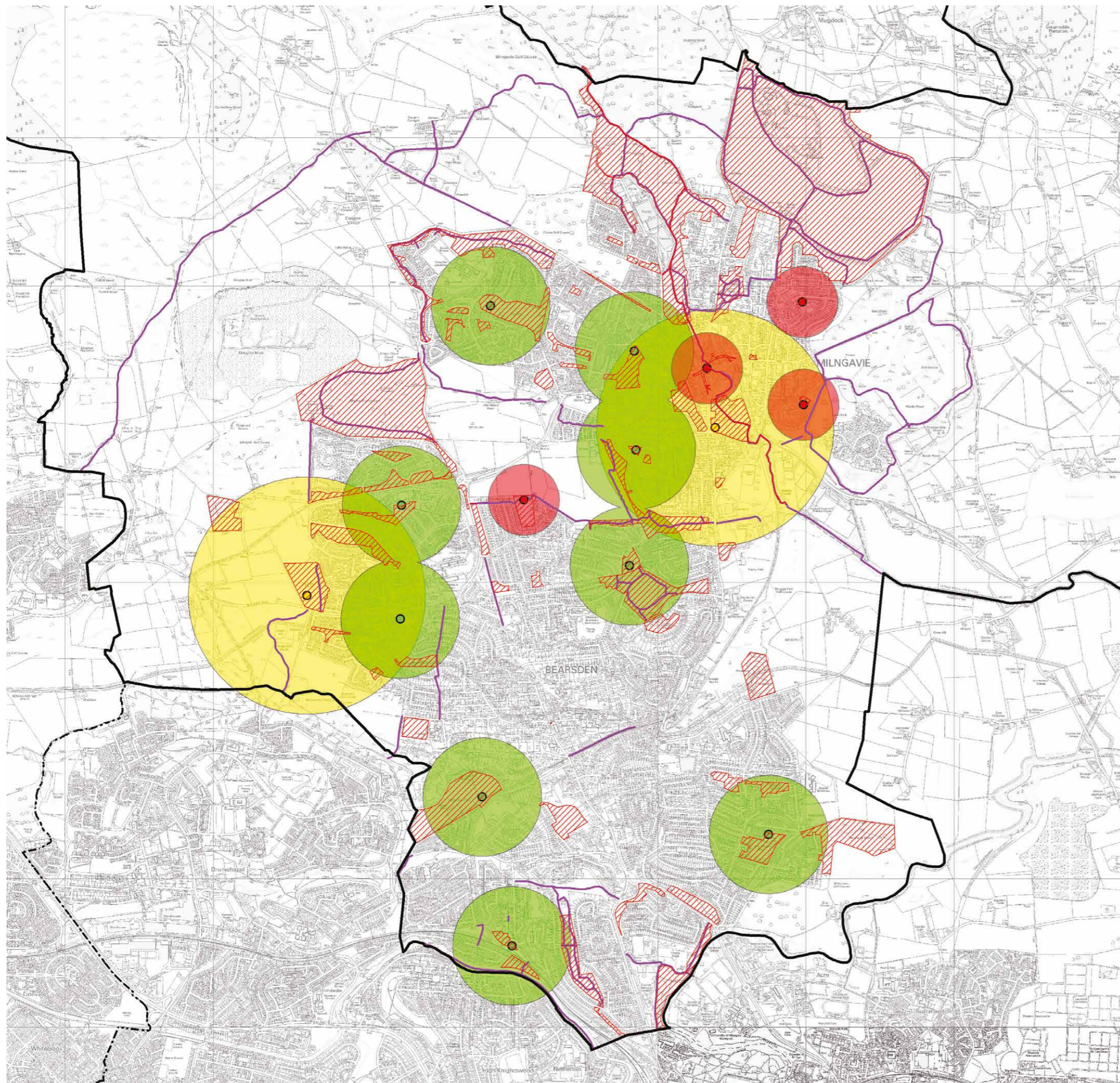
January 2014

7929 GIS 108

### Legend

-  East Dunbartonshire Local Authority Boundary
-  Scottish Local Authority Boundaries
-  Greenspace Audit Sites
- Playgrounds**
-  LAP
-  LEAP
-  NEAP
-  No survey
-  Under Construction
-  Core Paths
-  LAP 240m buffer
-  LEAP 400m buffer
-  NEAP 800m buffer

Note:  
 Accessibility is based on notional standards - to be agreed



**Figure 5a**

### Playspace Accessibility

**(Bearsden and Milngavie)**



This map is reproduced from Ordnance Survey material with the permission of Ordnance Survey on behalf of the Controller of Her Majesty's Stationary Office © Crown Copyright 2013. Unauthorised reproduction infringes Crown copyright and may lead to prosecution or civil proceedings. AL100017966



## Open Space Strategy










January 2014

7929 GIS 109

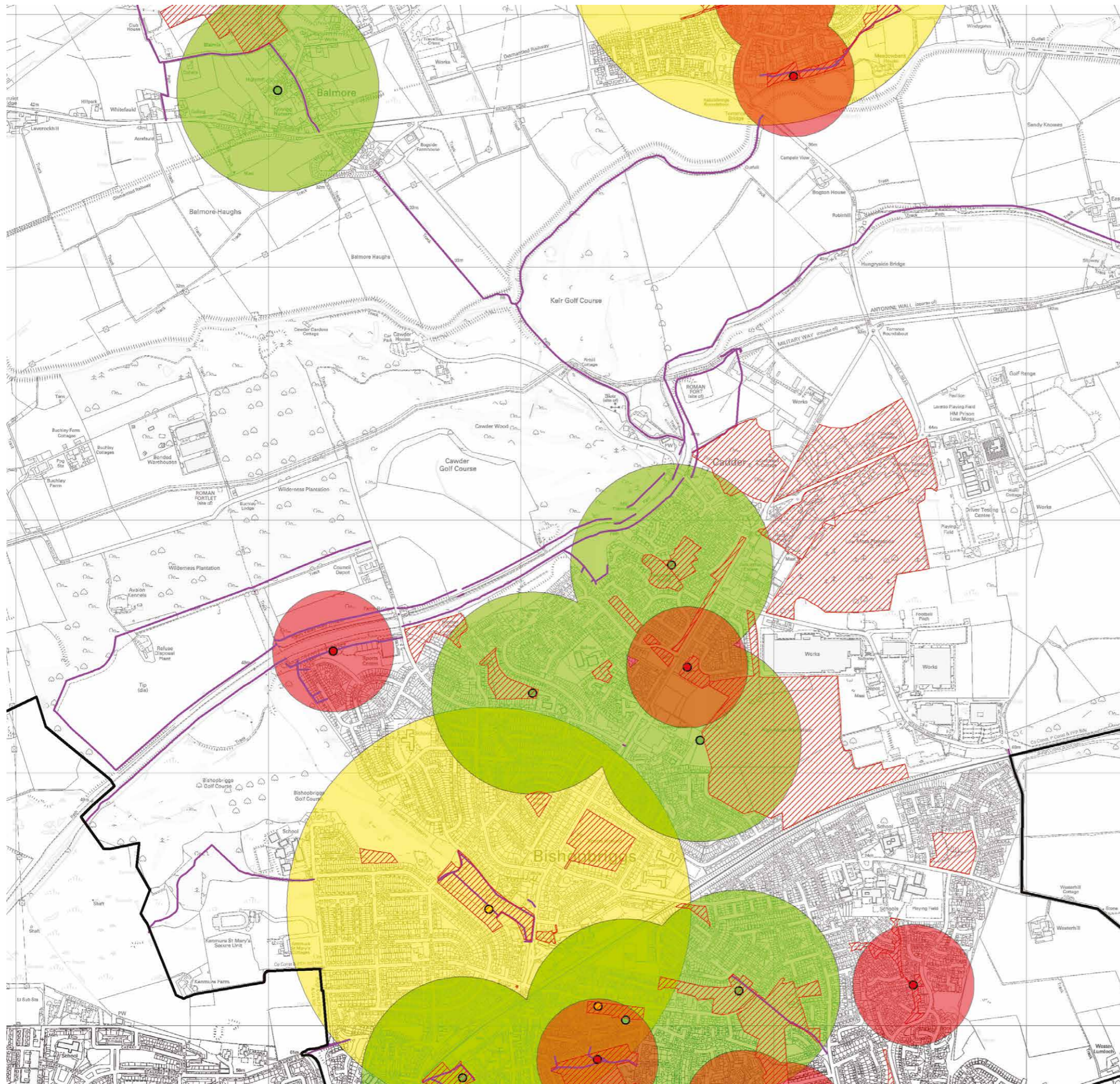
### Legend

-  East Dunbartonshire Local Authority Boundary
-  Scottish Local Authority Boundaries
-  Greenspace Audit Sites

### Playgrounds

-  LAP
-  LEAP
-  NEAP
-  No survey
-  Under Construction
-  Core Paths
-  LAP 240m buffer
-  LEAP 400m buffer
-  NEAP 800m buffer

Note:  
 Accessibility is based on notional standards - to be agreed



**Figure 5b**

### Playspace Accessibility

**(Bishopbriggs, Torrance and Balmore)**



This map is reproduced from Ordnance Survey material with the permission of Ordnance Survey on behalf of the Controller of Her Majesty's Stationary Office © Crown Copyright 2013. Unauthorised reproduction infringes Crown copyright and may lead to prosecution or civil proceedings. AL100017966



## Open Space Strategy










January 2014

7929 GIS 110

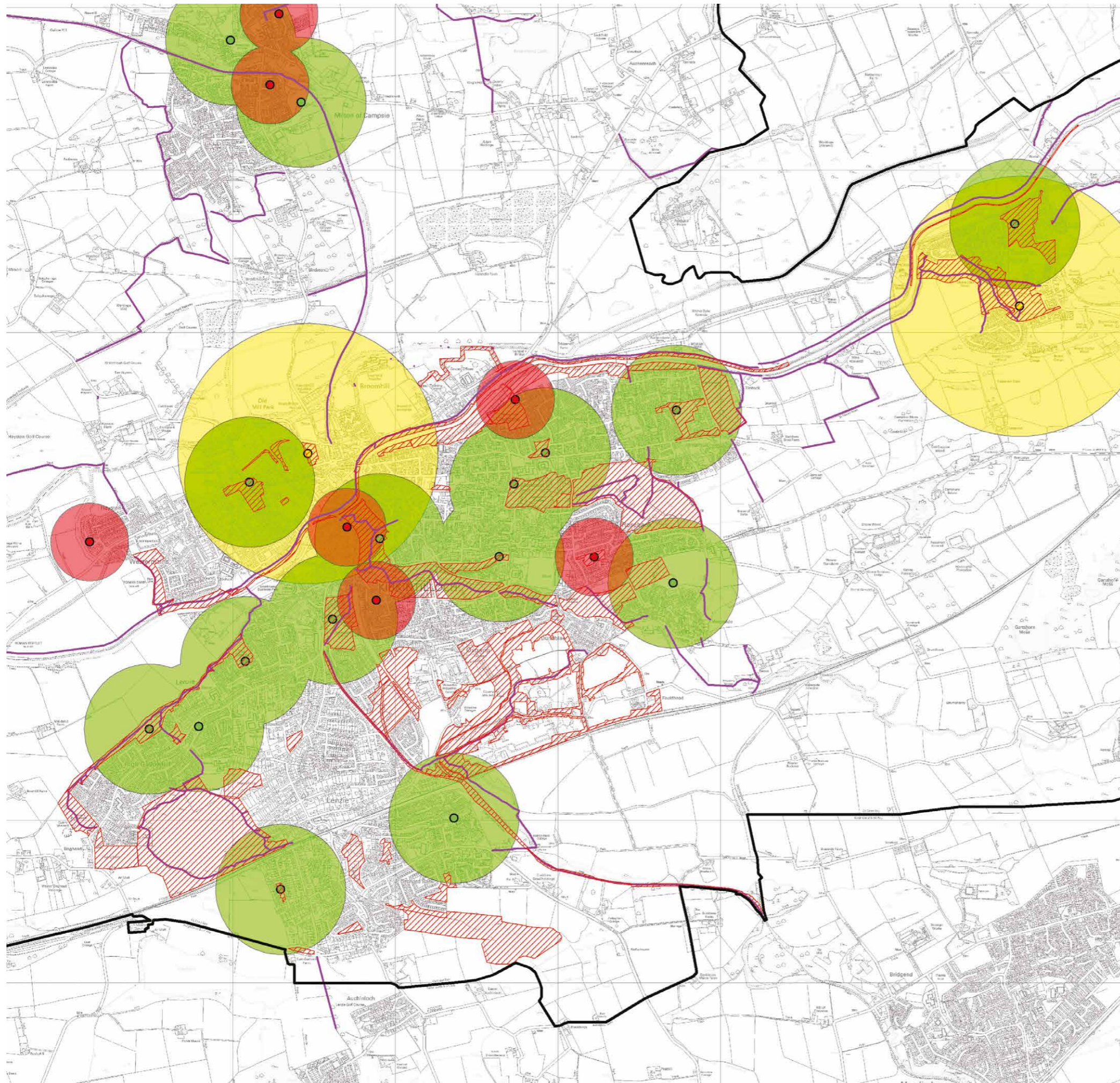
### Legend

-  East Dunbartonshire Local Authority Boundary
-  Scottish Local Authority Boundaries
-  Greenspace Audit Sites

### Playgrounds

-  LAP
-  LEAP
-  NEAP
-  No survey
-  Under Construction
-  Core Paths
-  LAP 240m buffer
-  LEAP 400m buffer
-  NEAP 800m buffer

Note:  
 Accessibility is based on notional standards - to be agreed



**Figure 5c**

### Playspace Accessibility

(Kirkintilloch, Lenzie and Twechar)



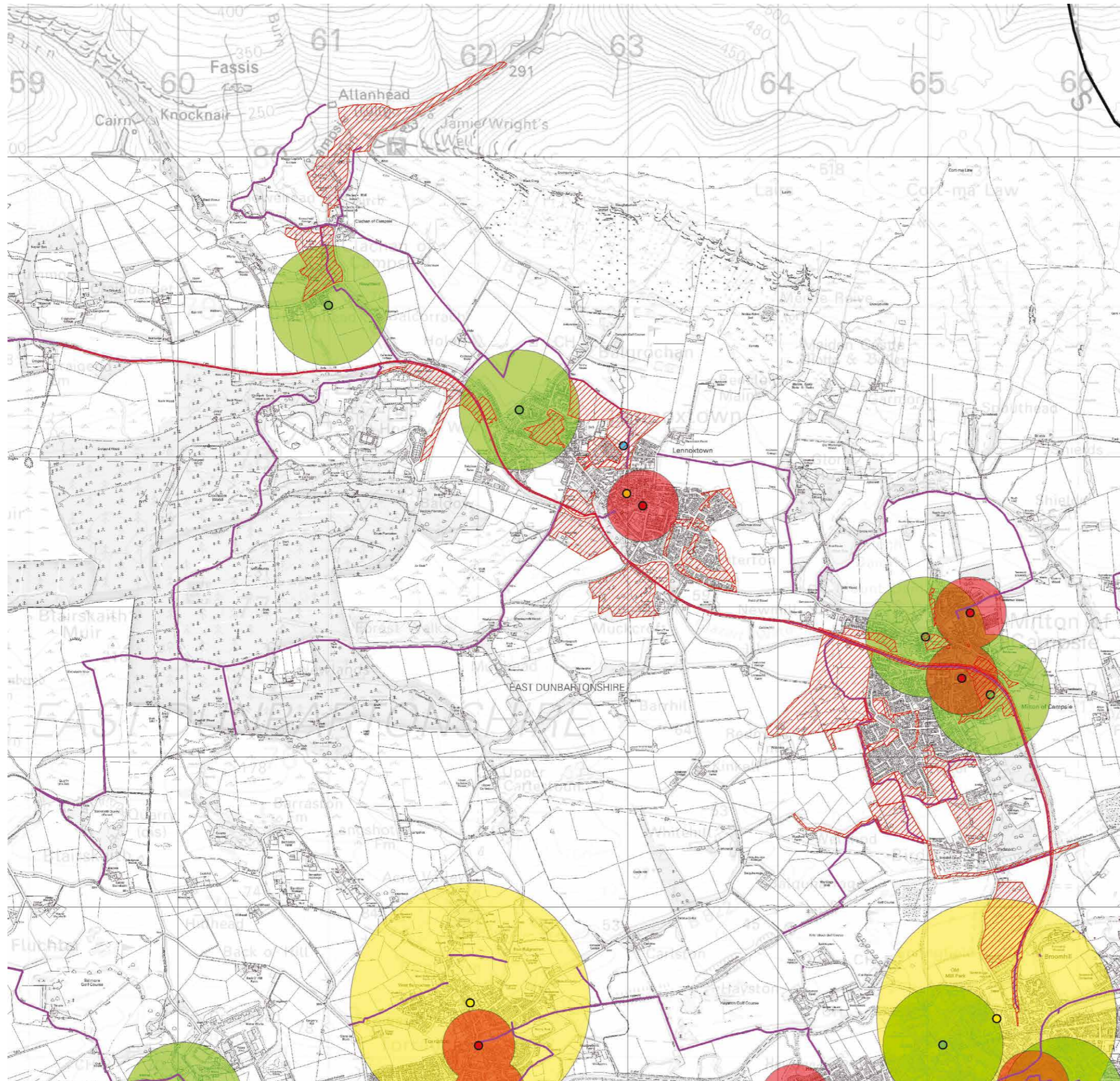
This map is reproduced from Ordnance Survey material with the permission of Ordnance Survey on behalf of the Controller of Her Majesty's Stationary Office © Crown Copyright 2013. Unauthorised reproduction infringes Crown copyright and may lead to prosecution or civil proceedings. AL100017966



## Open Space Strategy

January 2014

7929 GIS 111



### Legend

- East Dunbartonshire Local Authority Boundary
- Scottish Local Authority Boundaries
- Greenspace Audit Sites

### Playgrounds

- LAP
- LEAP
- NEAP
- No survey
- Under Construction
- Core Paths
- LAP 240m buffer
- LEAP 400m buffer
- NEAP 800m buffer

Note:  
 Accessibility is based on notional standards - to be agreed

**Figure 5d**

### Playspace Accessibility

**(Lennoxtown, Milton of Campsie,  
 Clachan of Campsie and Haughead)**



This map is reproduced from Ordnance Survey material with the permission of Ordnance Survey on behalf of the Controller of Her Majesty's Stationary Office © Crown Copyright 2013. Unauthorised reproduction infringes Crown copyright and may lead to prosecution or civil proceedings. AL100017966