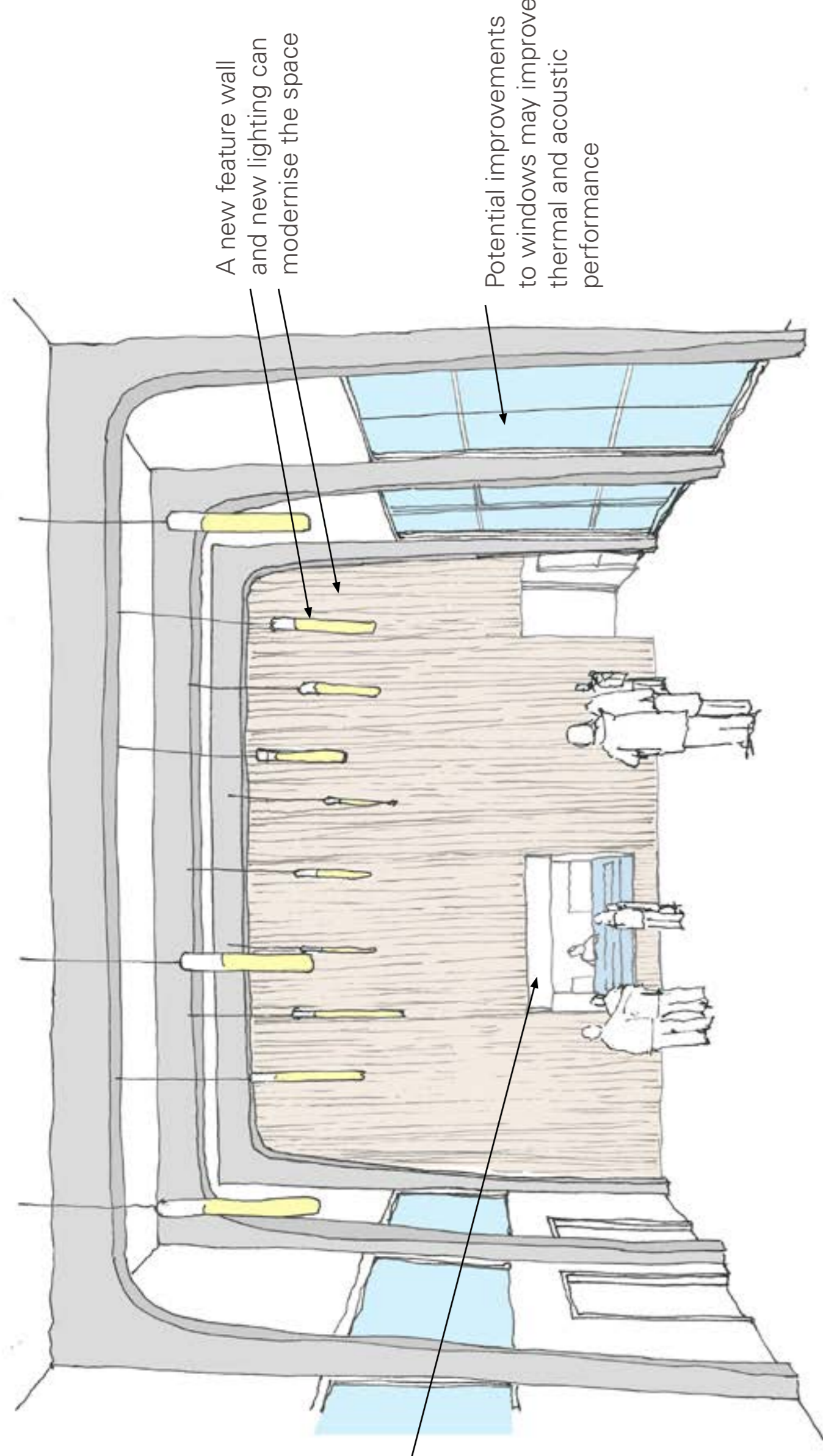


Proposals

Bishopbriggs Memorial Hall



Kitchen servery to Main Hall for convenience at functions

A new feature wall and new lighting can modernise the space

Potential improvements to windows may improve thermal and acoustic performance

Visualisation in Main Hall looking towards new kitchen and store



Relocating the kitchen can allow the lesser Hall to extend into this space

A new partition wall could provide appropriate acoustic separation and flexible use of the space

The Lesser Hall may be brought level with the rest of the building to improve accessibility by eliminating internal steps

Improved numbers of sanitary facilities to satisfy Building Standards requirements

Office can be relocated to main entrance for improved supervision

Hallway can open up to maximise accessibility for Accessible WC

Kitchen can be accessed via corridor with a servery direct into Main Hall

Possibility for additional plant space above kitchen adjacent to boiler room

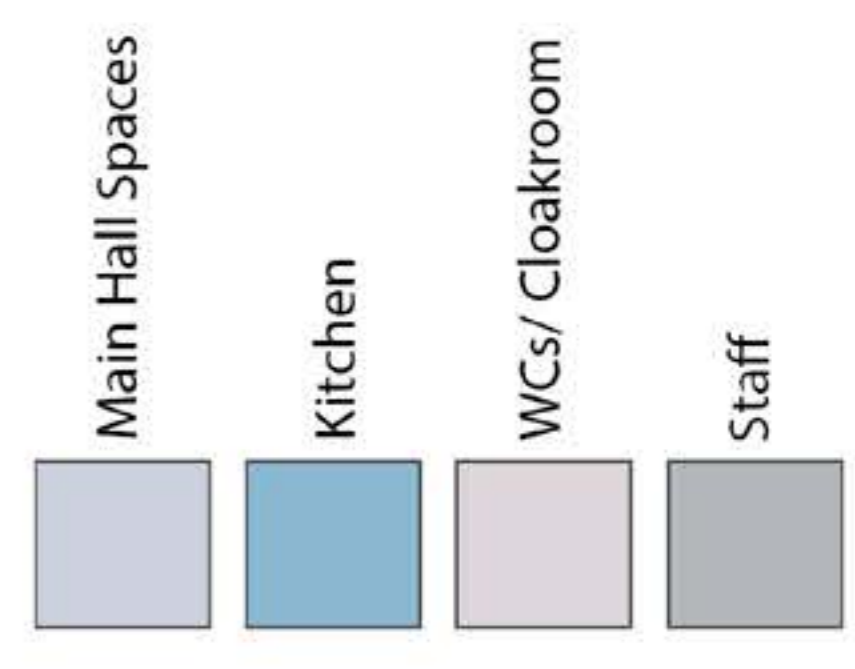
Minimal structural changes to main hall retain existing character

Improves acoustics in main hall

Store is easily accessible from Main Hall

Removing the existing stage would maximise the useable floor space in the Main Hall. A demountable stage could be used for functions.

Any improvements to the building fabric including the windows would improve thermal and acoustic performance



Proposals

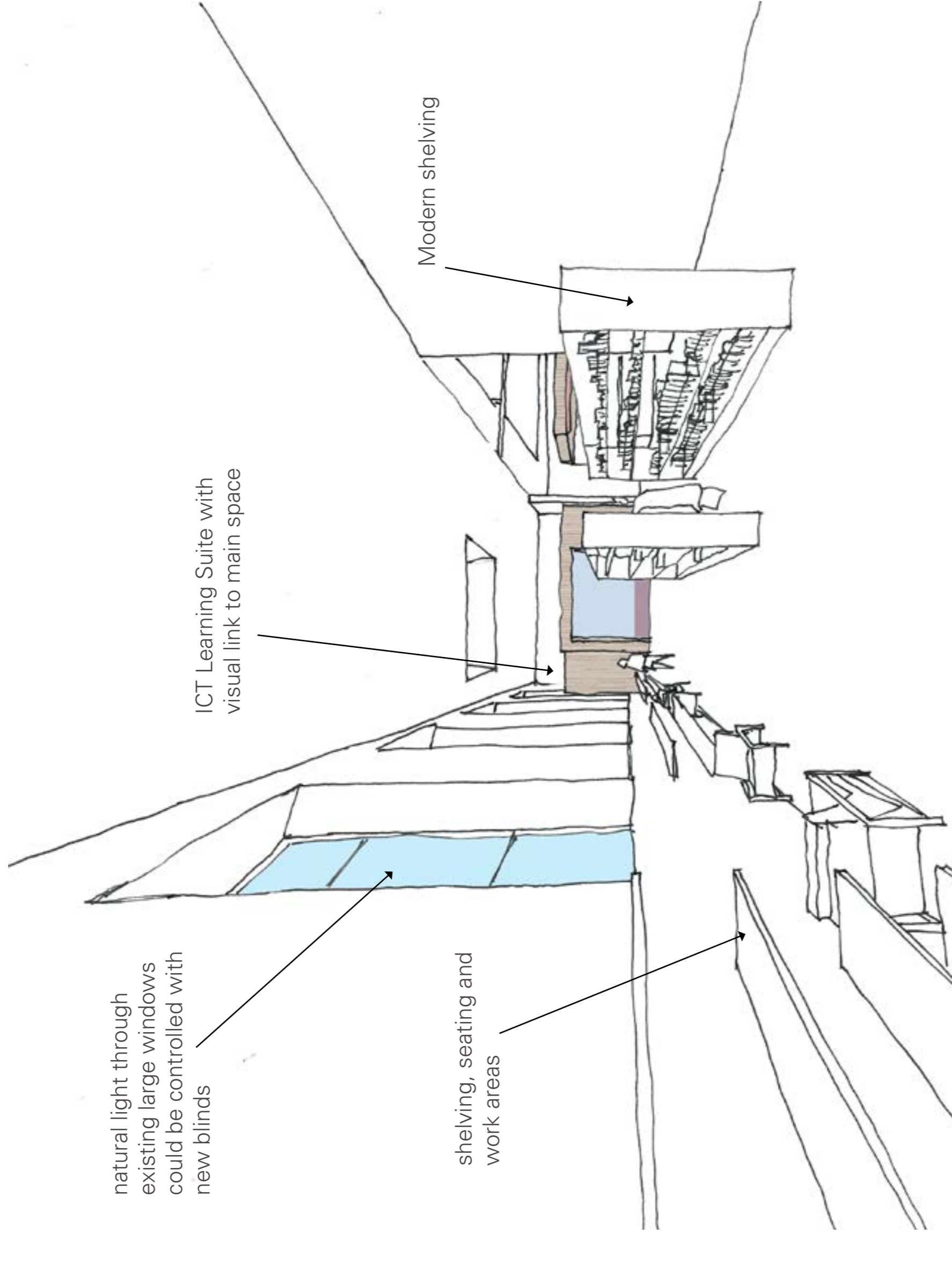
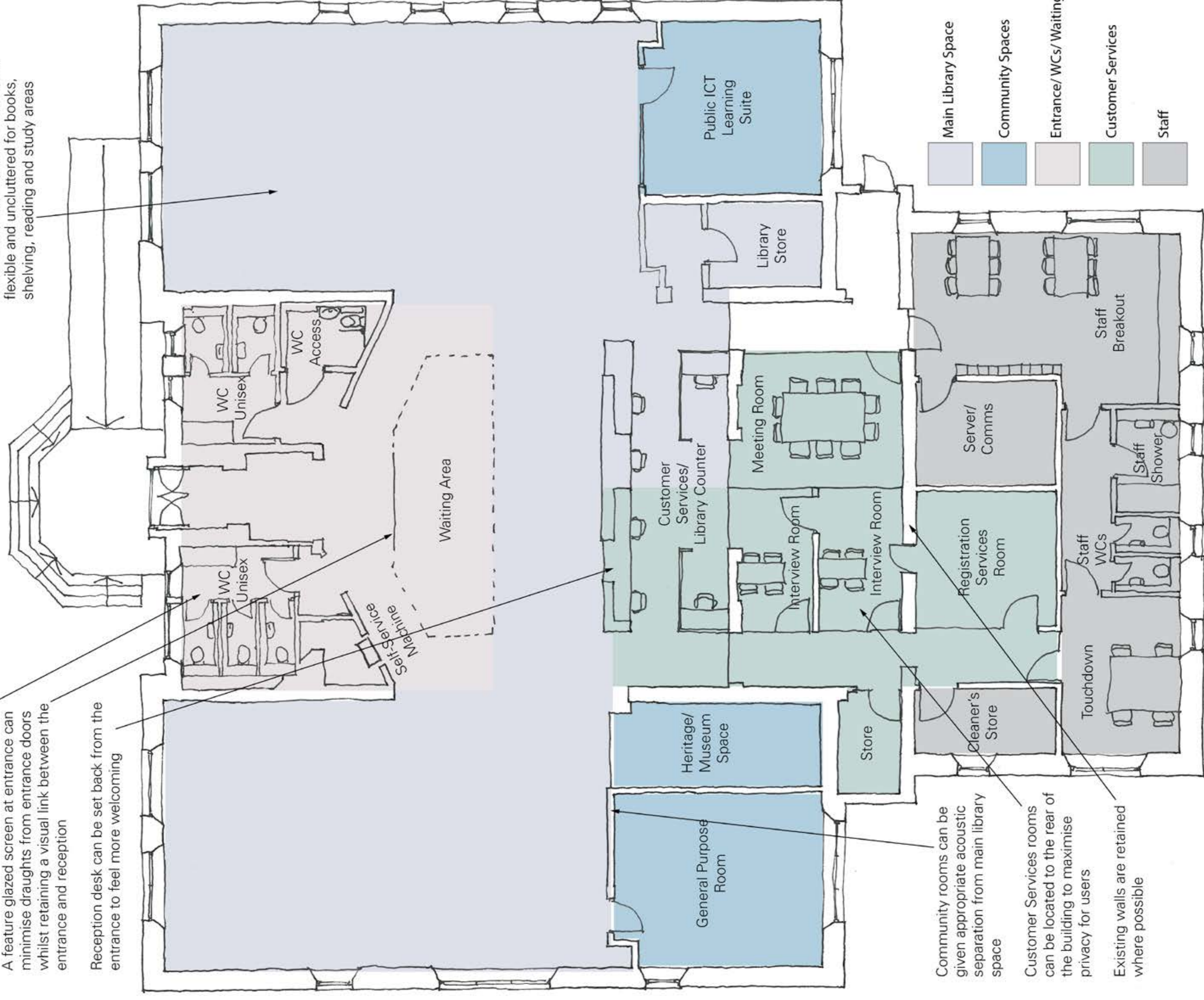
Bishopbriggs Library Hub

New sanitary facilities to meet Building Standards requirements

A feature glazed screen at entrance can minimise draughts from entrance doors whilst retaining a visual link between the entrance and reception

Reception desk can be set back from the entrance to feel more welcoming

Main library floor space can be open, flexible and uncluttered for books, shelving, reading and study areas

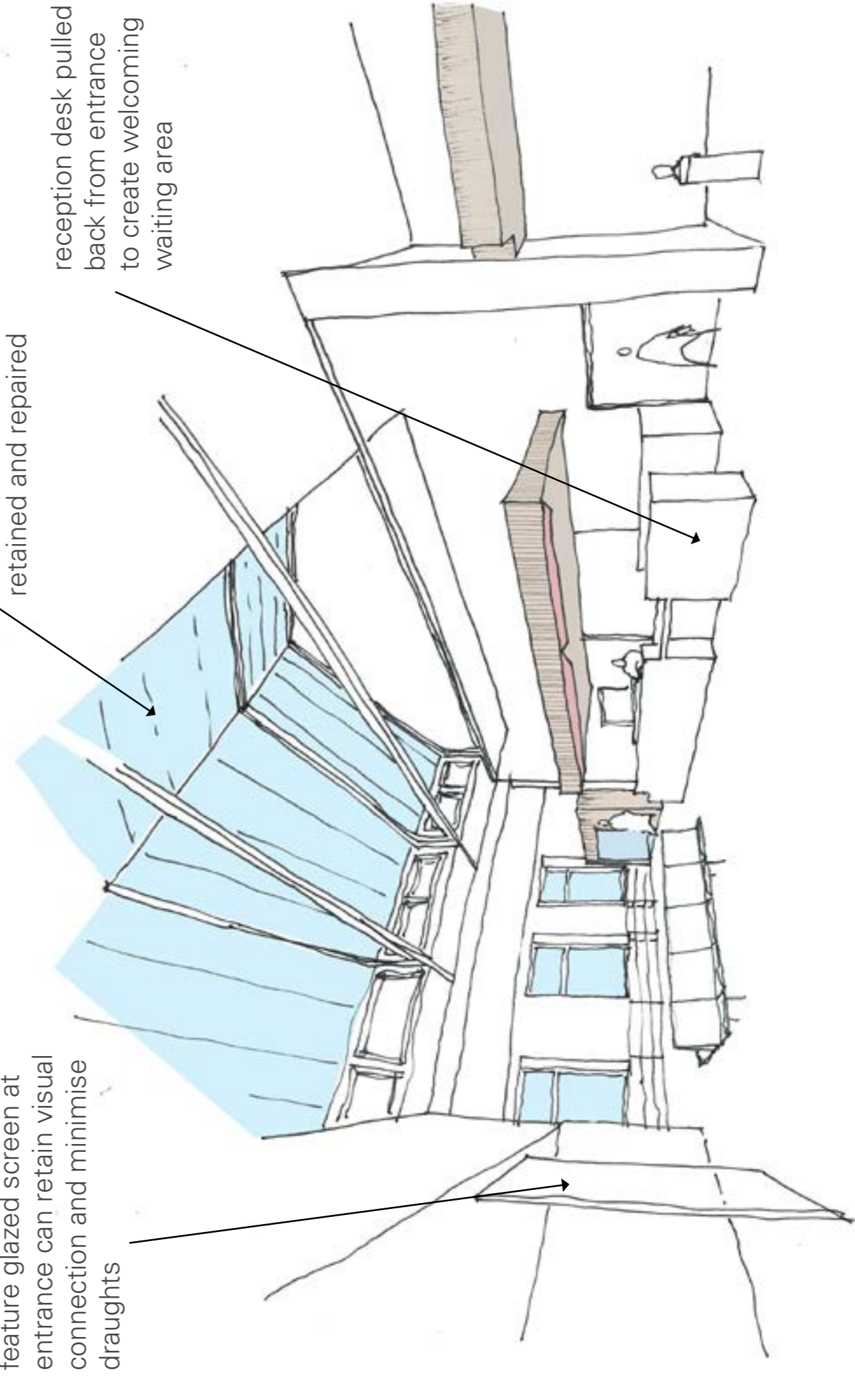


Looking along side gallery towards ICT Learning Suite. The space is open, flexible and uncluttered, making use of natural light through generous existing windows.

feature glazed screen at entrance can retain visual connection and minimise draughts

existing rooflight retained and repaired

reception desk pulled back from entrance to create welcoming waiting area



Looking past waiting area towards reception and heritage space