



Bishopbriggs Library Hub

Reception is too close to entrance and is intimidating

Reception desk can be pulled back to allow entrance to feel more open and welcoming

Open space of main library should be retained and improved

The library floor space can retain the existing character and flexibility with improvements to the fabric

Customer Services facilities need welcoming private and secure space

These facilities have the opportunity to be located to the rear of the building to maximise privacy for users

Facilities need to be modernised

The building is to be fully refurbished with new heating, lighting and sanitary facilities throughout

Environmentally friendly

Improvements to the building fabric will lower energy use. New window blinds can reduce overheating and glare in summer months. Staff shower provision can encourage green transport to work such as cycling.

Space for community groups

The existing general purpose room will be replaced with a new space with enhanced acoustic separation from the main library space as well as a new public ICT Learning Suite

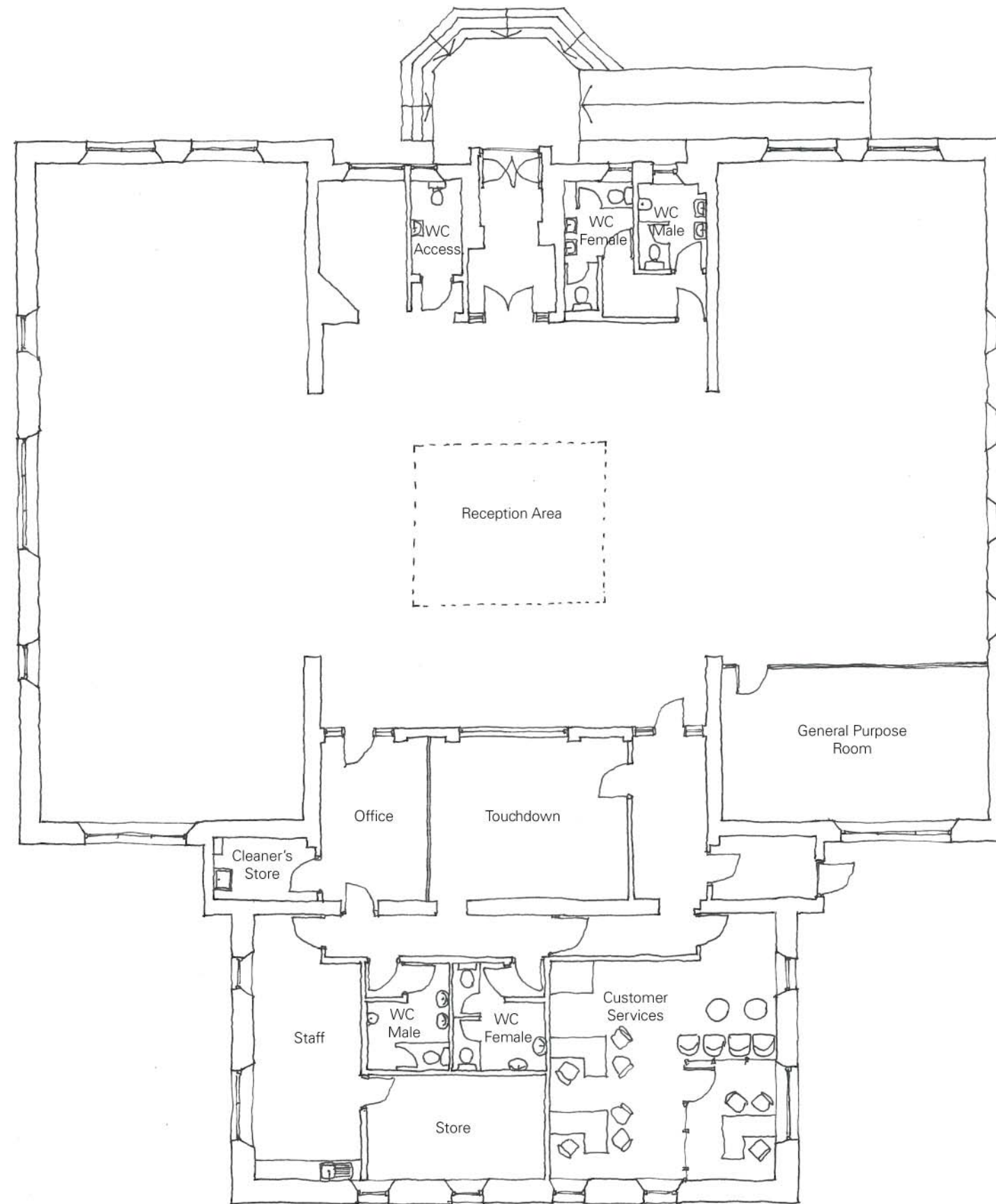


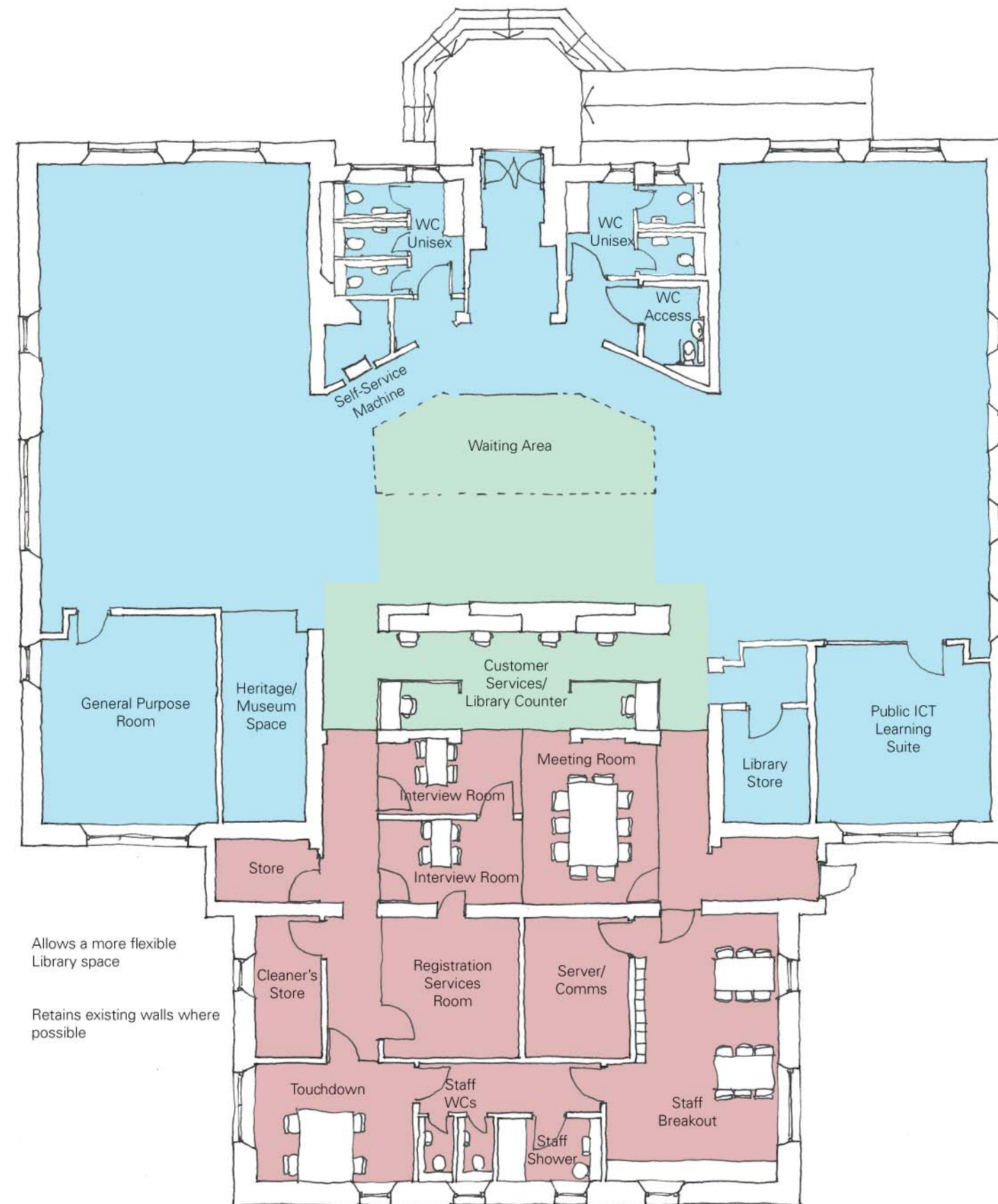
Existing building envelope retained with full refurbishment including new heating, lighting and sanitary facilities.



William Patrick Library at Kirkintilloch Community Hub

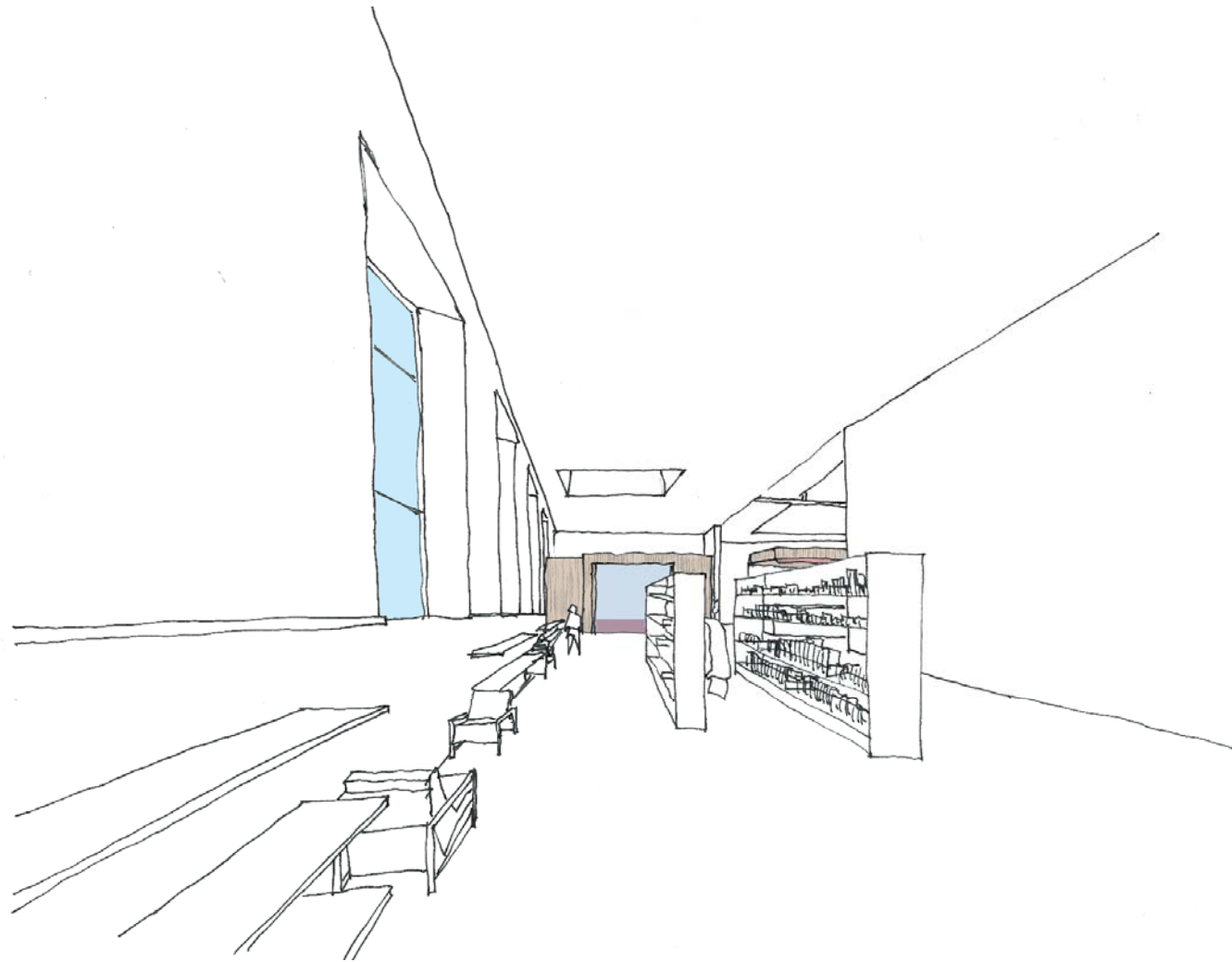
Lennoxtown Community Hub and Library



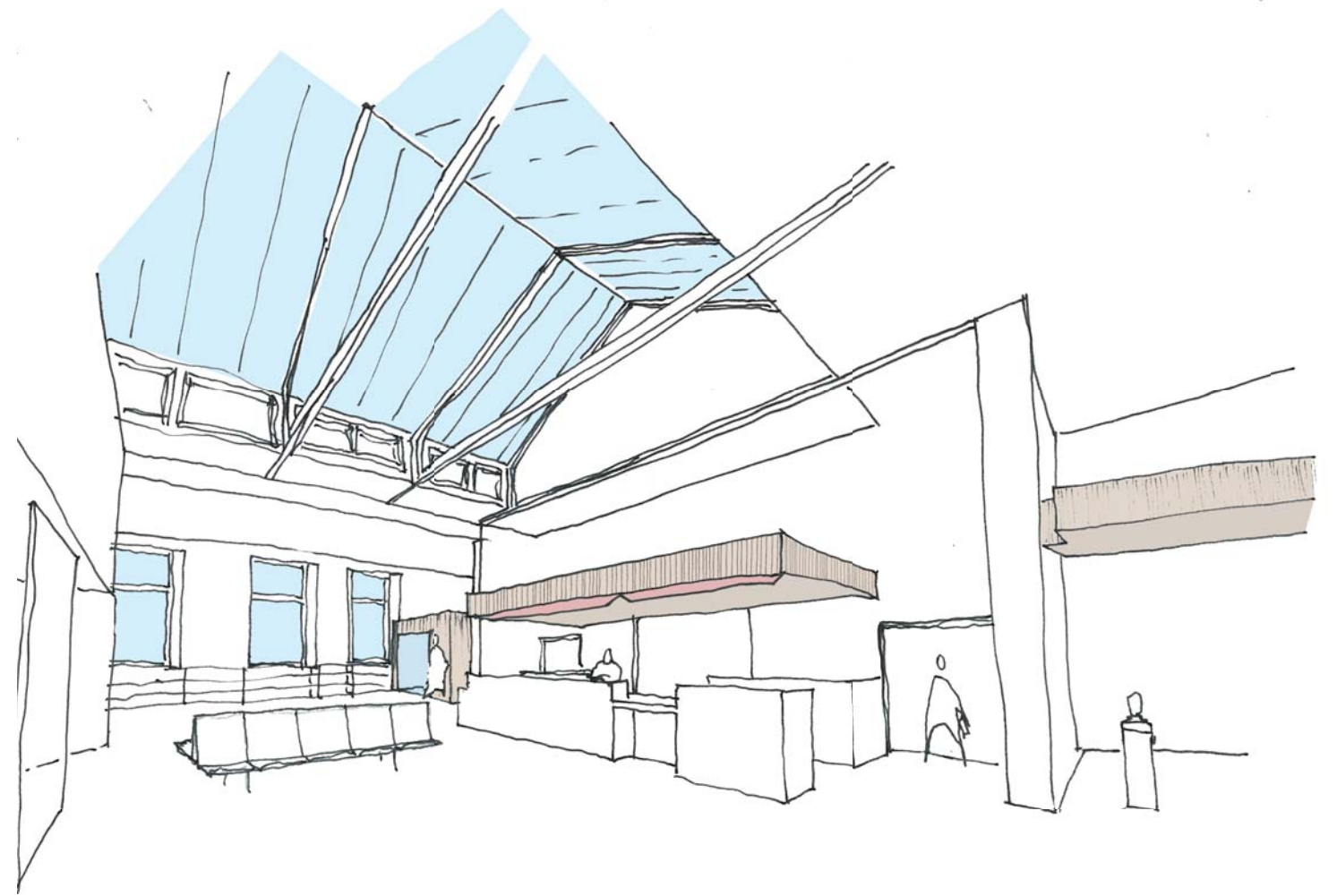


Allows a more flexible Library space

Retains existing walls where possible



Side Gallery



Reception